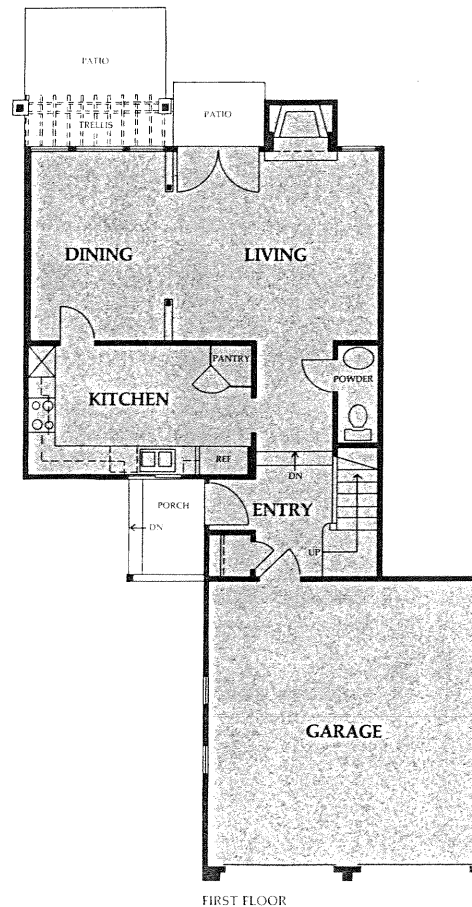


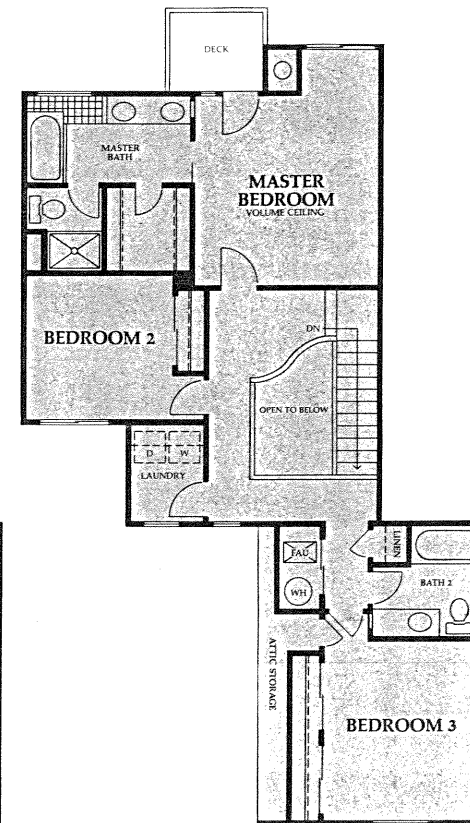
F

rom the moment you step into the dramatic entry, you are surrounded with an aura of sophistication. A sweeping staircase leads upward to the graceful curve of the landing high overhead. The large country kitchen with its abundant light and generous pantry offers plenty of room for casual dining. As you continue into the uncommonly spacious formal dining room, your attention is captured by an expansive wall of windows that overlooks the water or a private backyard. The decorative divider between the dining room and the living room contributes to a feeling of time-honored craftsmanship. In the master bedroom, a cozy windowed alcove is ideal for a desk or chaise. The master bath, with its tiled bench and four-foot square picture window above the tub, is a statement of luxury. The full-size laundry room and generous attic storage are features seldom found in a townhome floor plan.

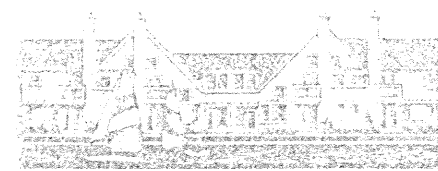
P L A N
3 BEDROOMS, 2-1/2 BATHS
1,733 SQUARE FEET



FIRST FLOOR



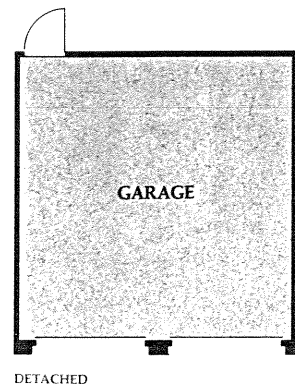
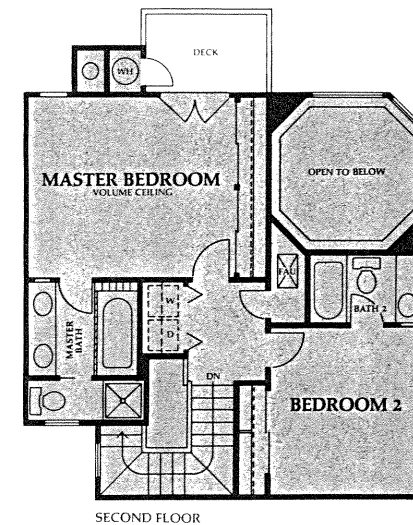
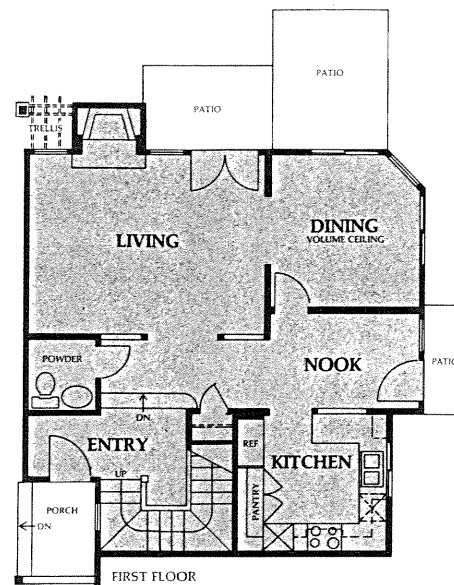
SECOND FLOOR



A

s you enter from the stately front porch, linger for a moment on the raised entry landing. The eye is drawn immediately through decorative wood columns and out into the expansive living room. Picture windows on either side of the fireplace open the living areas to water views. Above the fireplace is a display niche, typical of the meticulous detailing you will find throughout The Manors. The dining room, with its soaring 16-foot ceiling, octagonal recessed lighting cove, and 270-degree water views, is nothing less than spectacular. The airy feel of the dining room continues through the charming breakfast nook and into the kitchen, with its striking driftwood-finish oak cabinetry. As you progress upstairs, a large window washes the stairwell with natural light. Just off the elegant master suite is a private deck, the perfect spot to sip your after-dinner coffee and watch the evening clouds drift over the lagoon.

D E L M A R
P L A N A
2 BEDROOMS, 2-1/2 BATHS
1,447 SQUARE FEET

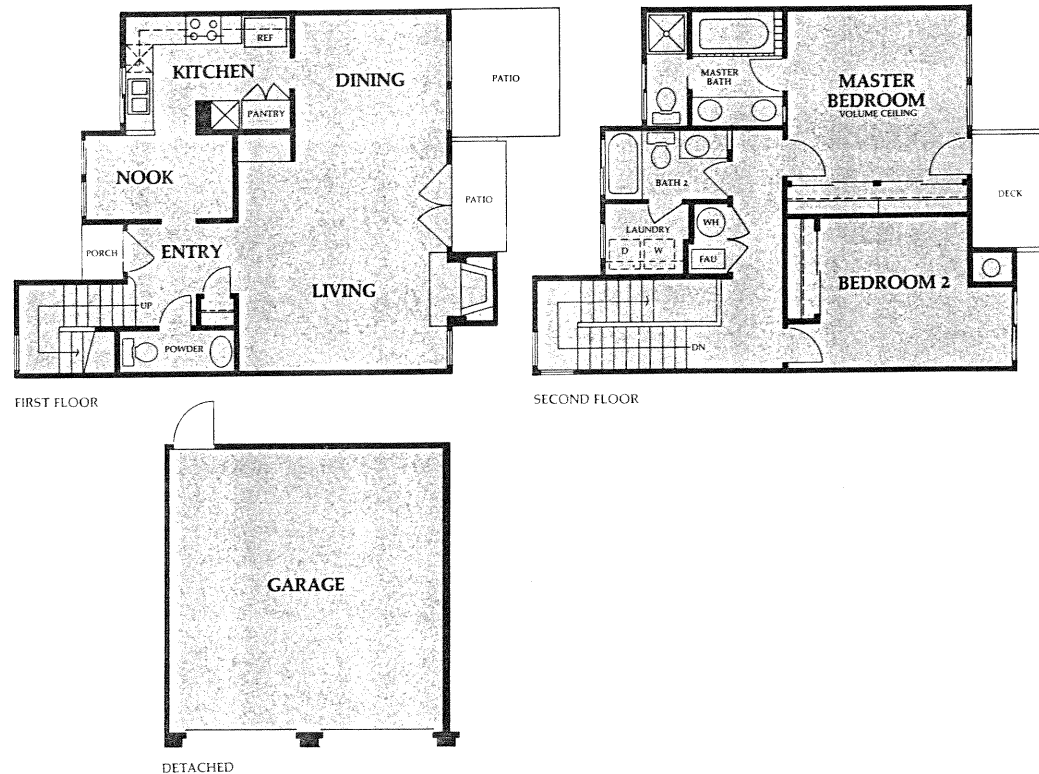




C A M B R I D G E
P L A N D 2
2 BEDROOMS, 2-1/2 BATHS
1,367 SQUARE FEET

T

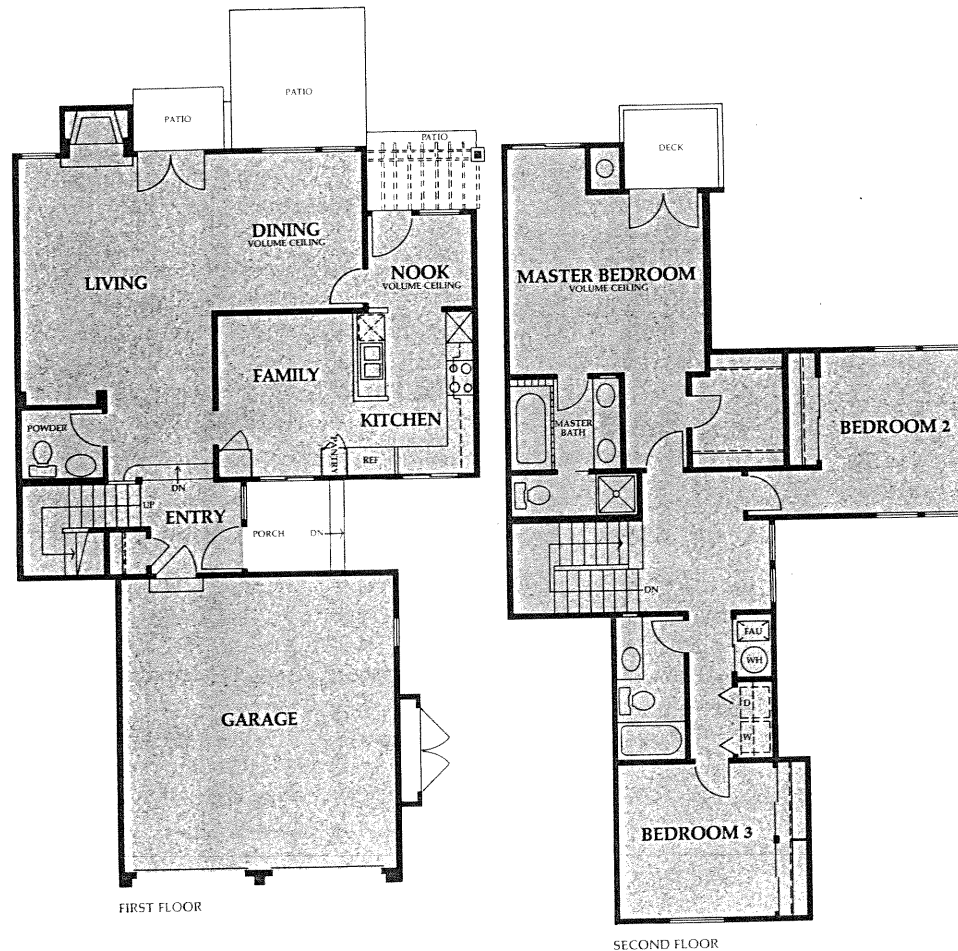
his two-bedroom version of the Waverton features the same spacious first-floor layout. As in all our models, oversized French doors and nine-foot ceilings bring a sense of grandeur to living areas. The woodburning fireplace with its hearth and facings of hand-set ceramic tile invites cozy evenings filled with pleasant conversation. An artful triad of high windows brings natural light into the stairwell and out onto the large upstairs landing. Pause for a moment in the master bedroom and notice the exceptional features that surround you: spacious wardrobes, two large picture windows, a dramatic vaulted ceiling, French doors opening onto a private deck, and a luxurious bath. In the second bedroom, visual interest is heightened by a windowed seating/desk alcove. Conveniently located near the bedrooms is a full-size windowed laundry room with generous storage.



O

ur largest floor plan, the Southampton offers rooms for gracious entertaining and casual relaxation. A large sidelight by the front door makes the entryway warm and inviting. The spacious living room with decorative ceiling beams opens onto the formal dining room with a 13-foot cathedral ceiling and dramatic clerestory windows. Imagine a leisurely weekend brunch in the sunny nook, with its adjoining trellis-covered patio. The family room offers two built-in storage cabinets, with plenty of room in between for a home entertainment center. Upstairs, the large landing features a windowed alcove — an ideal spot for reading. Clerestory windows above French doors bathe the master bedroom with drama and light. All three bedrooms are situated at opposite ends of a generous hallway, affording each an added measure of privacy.

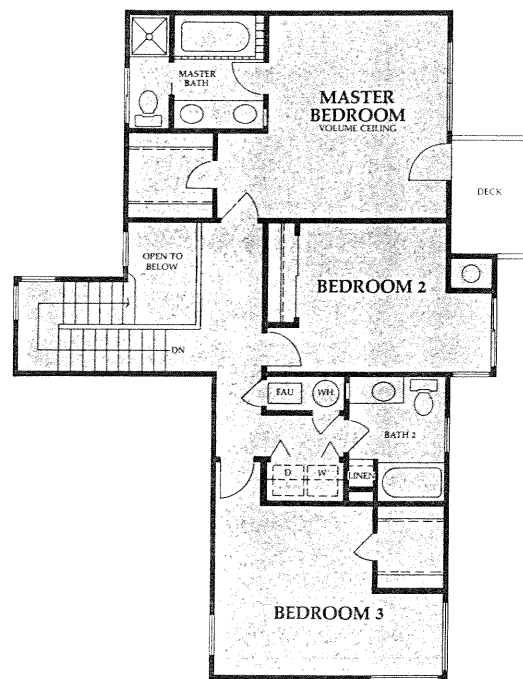
P L A N C
3 BEDROOMS, 2-1/2 BATHS, FAMILY ROOM
1,874 SQUARE FEET



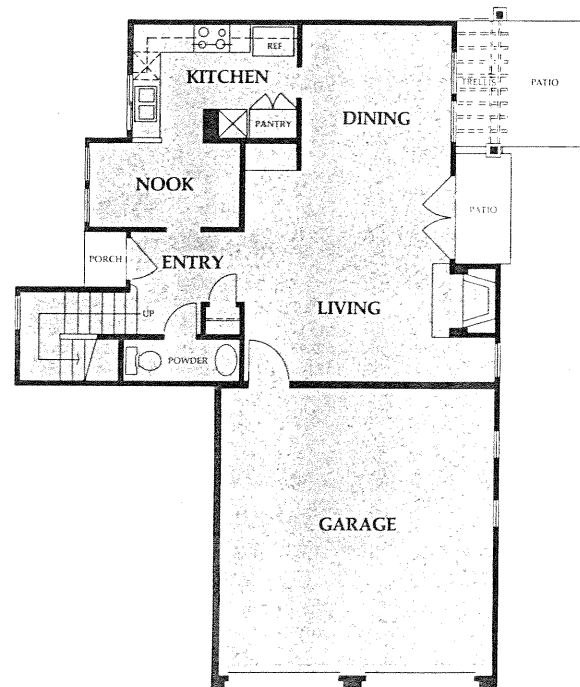
T

he architectural detail characteristic of The Manors is exemplified by the Waverton. Light from a high window over the front door brightens the entrance to this distinctive home. A generous niche in the spacious breakfast nook is ideal for a china cabinet or built-in. You'll be proud to receive guests in the impressive living room, with its woodburning fireplace and expansive sight lines. Eight-foot tall French doors and picture windows overlook a patio and view beyond. For collectors, there are many opportunities to display artwork or sculpture: two niches in the living room, a long wall on the upstairs landing, and the entry hall to the master suite. The third bedroom is large enough to serve as a second master bedroom, and features a walk-in closet and a spacious seating/desk alcove. Two special end-versions of the Waverton offer a den and large work area on the first floor, providing approximately 1,895 square feet of living space.

P L A N
3 BEDROOMS, 2-1/2 BATHS
1,713 SQUARE FEET



FIRST FLOOR



SECOND FLOOR