

# ONE MARINA

One waterfront location, one great place to live.

2 Bedrooms  
2.5 Baths

1



MAIN LEVEL

# FEATURES LIST

## HOME

8' Therma-Tru® fiberglass entry door  
Satin nickel entry door hardware  
Ceramic 12"x12" entry tile  
Carpet throughout living room, dining room,  
stairs and bedroom areas  
8' two-panel interior doors  
Satin nickel lever interior door hardware  
Laundry room (washer and dryer optional)  
Tech space (per plan)  
Decora light switches  
Phone/Cat 5 in kitchen, family/living room, bedrooms  
and tech space; cable in family room and bedrooms  
Security system pre-wire at operable doors at entry  
level, with key pad pre-wire at garage entrance door  
Pre-wired for dual-zone air conditioning  
(air conditioning system is optional)  
9' ceilings or higher throughout (per plan)  
White vinyl dual pane, low-E windows  
2-car attached garage with EasyLift belt driven  
automatic garage opener  
Tankless hot water heaters

## BATHROOMS

6"x 6" tile countertops  
Mid-Continent® Bayfield Oak Cabinetry  
Kohler® dual sinks at vanity in master baths  
Moen® chrome plumbing fixtures  
Separate shower and Sterling soaking tub (per plan)  
Private water closet with elongated toilet  
in master baths  
Pedestal sink in powder room with elongated  
toilet (per plan)  
Vinyl flooring

## KITCHEN

Whirlpool® stainless steel appliances

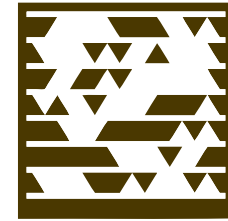
- 30" 4-burner, continuous grate gas cooktop
- 30" electric, self-cleaning, under-counter oven
- Built-in microwave/hood combo
- 4-cycle Energy Star dishwasher

6"x 6" tile countertops with 6" backsplash  
Vinyl flooring  
Moen chrome faucet  
Kohler white cast iron double bowl sink  
½ horsepower disposal  
Mid-Continent Bayfield Oak Cabinetry  
Kitchen islands (per plan)

## UPGRADES & OPTIONS

We have an extensive options and upgrades program. Please see a sales associate for details.

Alarm system  
Air conditioning  
Lighting upgrades  
Home theatre upgrades  
Cabinet upgrades  
Countertop upgrades  
Flooring upgrades  
Plumbing fixture upgrades  
Designer interior paint scheme  
Window treatments  
Appliance upgrades



## TAKE A VIDEO TOUR OF PLAN 1

Gettag.mobi from your mobile device

# ONE MARINA

info@onemarinahomes.com • onemarinahomes.com  
650.369.3500

Exclusively represented by Polaris Group  
A California licensed broker. DRE 01499250



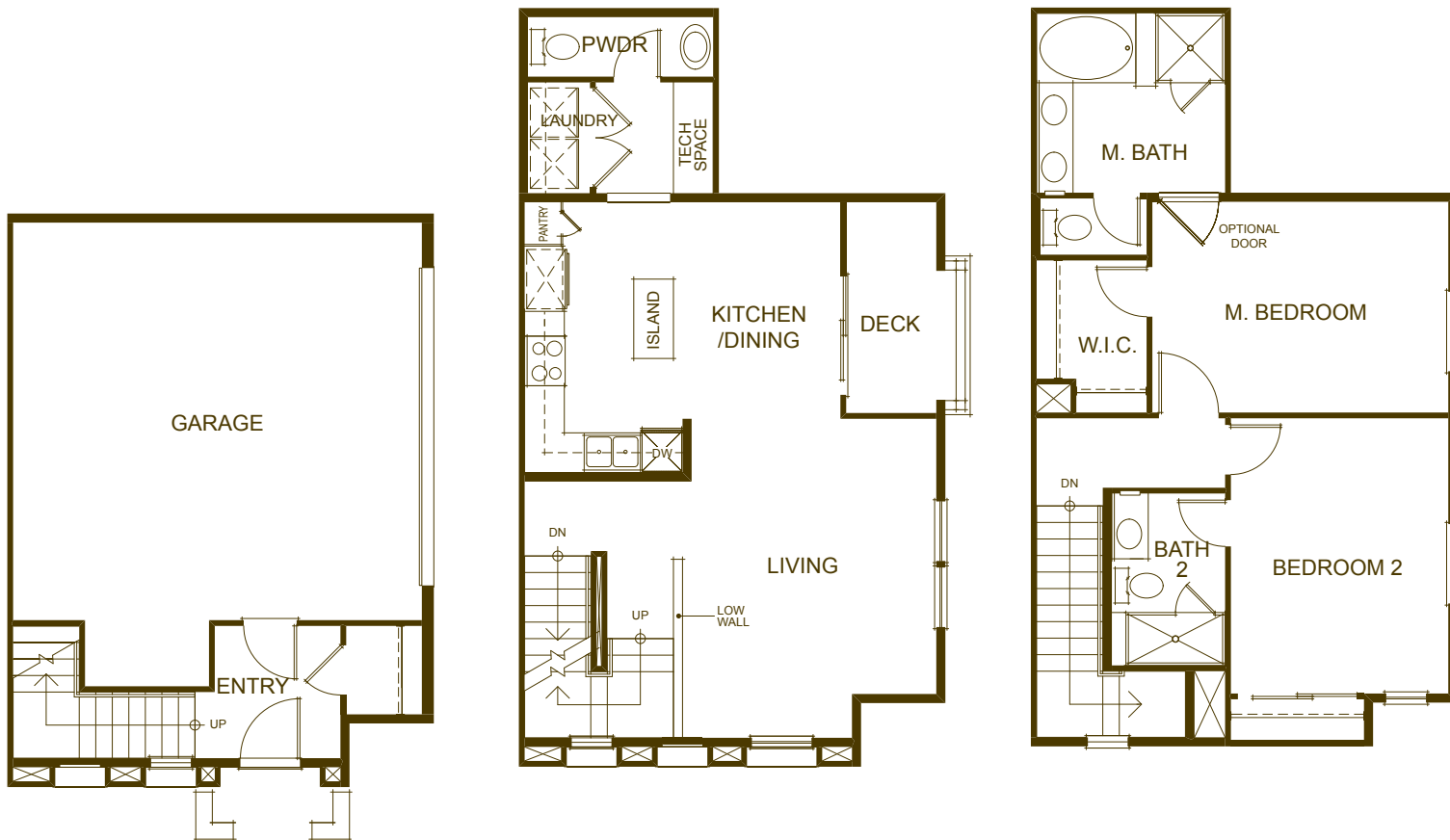
Floorplans are conceptual only. They should not be relied upon as representations, express or implied. The developer reserves the right to change plans, elevations, materials and specifications without prior notice. Deck size and configurations vary per home. Revised August 2012. ©2012 The Pauls Corporation.

# ONE MARINA

One waterfront location, one great place to live.

2 Bedrooms  
2.5 Baths

2



LOWER LEVEL

MAIN LEVEL

UPPER LEVEL

# FEATURES LIST

## HOME

8' Therma-Tru® fiberglass entry door  
Satin nickel entry door hardware  
Ceramic 12"x12" entry tile  
Carpet throughout living room, dining room,  
stairs and bedroom areas  
8' two-panel interior doors  
Satin nickel lever interior door hardware  
Laundry room (washer and dryer optional)  
Tech space (per plan)  
Decora light switches  
Phone/Cat 5 in kitchen, family/living room, bedrooms  
and tech space; cable in family room and bedrooms  
Security system pre-wire at operable doors at entry  
level, with key pad pre-wire at garage entrance door  
Pre-wired for dual-zone air conditioning  
(air conditioning system is optional)  
9' ceilings or higher throughout (per plan)  
White vinyl dual pane, low-E windows  
2-car attached garage with EasyLift belt driven  
automatic garage opener  
Tankless hot water heaters

## BATHROOMS

6"x 6" tile countertops  
Mid-Continent® Bayfield Oak Cabinetry  
Kohler® dual sinks at vanity in master baths  
Moen® chrome plumbing fixtures  
Separate shower and Sterling soaking tub (per plan)  
Private water closet with elongated toilet  
in master baths  
Pedestal sink in powder room with elongated  
toilet (per plan)  
Vinyl flooring

## KITCHEN

Whirlpool® stainless steel appliances

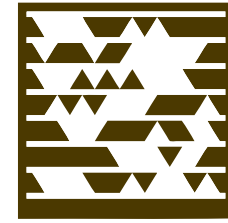
- 30" 4-burner, continuous grate gas cooktop
- 30" electric, self-cleaning, under-counter oven
- Built-in microwave/hood combo
- 4-cycle Energy Star dishwasher

6"x 6" tile countertops with 6" backsplash  
Vinyl flooring  
Moen chrome faucet  
Kohler white cast iron double bowl sink  
½ horsepower disposal  
Mid-Continent Bayfield Oak Cabinetry  
Kitchen islands (per plan)

## UPGRADES & OPTIONS

We have an extensive options and upgrades program. Please see a sales associate for details.

Alarm system  
Air conditioning  
Lighting upgrades  
Home theatre upgrades  
Cabinet upgrades  
Countertop upgrades  
Flooring upgrades  
Plumbing fixture upgrades  
Designer interior paint scheme  
Window treatments  
Appliance upgrades



## TAKE A VIDEO TOUR OF PLAN 2

Gettag.mobi from your mobile device

# ONE MARINA

info@onemarinahomes.com • onemarinahomes.com  
650.369.3500

Exclusively represented by Polaris Group  
A California licensed broker. DRE 01499250



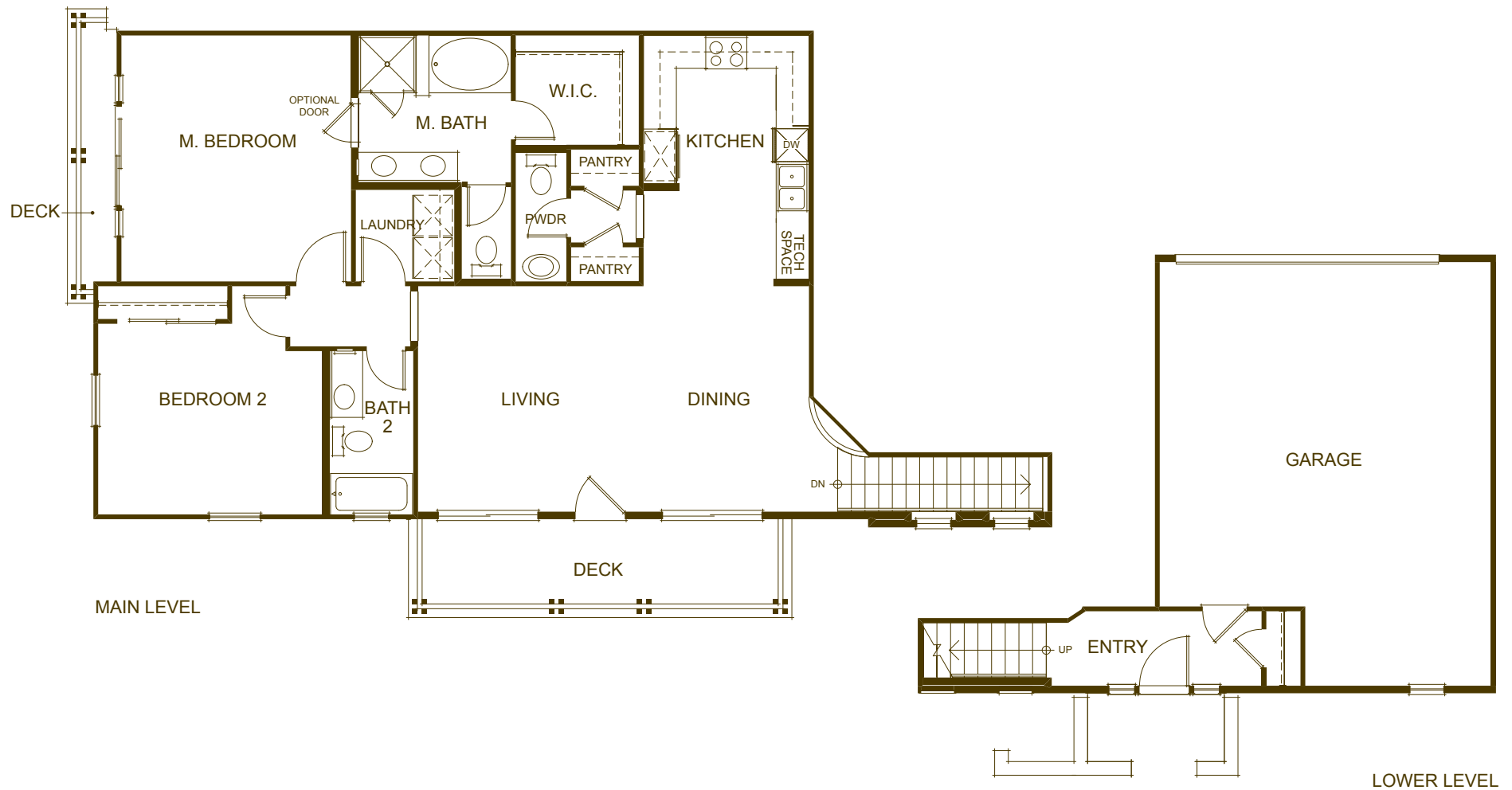
Floorplans are conceptual only. They should not be relied upon as representations, express or implied. The developer reserves the right to change plans, elevations, materials and specifications without prior notice. Deck size and configurations vary per home. Revised March 2012. ©2012 The Pauls Corporation.

# ONE MARINA

One waterfront location, one great place to live.

2 Bedrooms  
2.5 Baths

3



# FEATURES LIST

## HOME

8' Therma-Tru® fiberglass entry door  
Satin nickel entry door hardware  
Ceramic 12"x12" entry tile  
Carpet throughout living room, dining room,  
stairs and bedroom areas  
8' two-panel interior doors  
Satin nickel lever interior door hardware  
Laundry room (washer and dryer optional)  
Tech space (per plan)  
Decora light switches  
Phone/Cat 5 in kitchen, family/living room, bedrooms  
and tech space; cable in family room and bedrooms  
Security system pre-wire at operable doors at entry  
level, with key pad pre-wire at garage entrance door  
Pre-wired for dual-zone air conditioning  
(air conditioning system is optional)  
9' ceilings or higher throughout (per plan)  
White vinyl dual pane, low-E windows  
2-car attached garage with EasyLift belt driven  
automatic garage opener  
Tankless hot water heaters

## BATHROOMS

6"x 6" tile countertops  
Mid-Continent® Bayfield Oak Cabinetry  
Kohler® dual sinks at vanity in master baths  
Moen® chrome plumbing fixtures  
Separate shower and Sterling soaking tub (per plan)  
Private water closet with elongated toilet  
in master baths  
Pedestal sink in powder room with elongated  
toilet (per plan)  
Vinyl flooring

## KITCHEN

Whirlpool® stainless steel appliances

- 30" 4-burner, continuous grate gas cooktop
- 30" electric, self-cleaning, under-counter oven
- Built-in microwave/hood combo
- 4-cycle Energy Star dishwasher

6"x 6" tile countertops with 6" backsplash  
Vinyl flooring  
Moen chrome faucet  
Kohler white cast iron double bowl sink  
½ horsepower disposal  
Mid-Continent Bayfield Oak Cabinetry  
Kitchen islands (per plan)

## UPGRADES & OPTIONS

We have an extensive options and upgrades program. Please see a sales associate for details.

Alarm system  
Air conditioning  
Lighting upgrades  
Home theatre upgrades  
Cabinet upgrades  
Countertop upgrades  
Flooring upgrades  
Plumbing fixture upgrades  
Designer interior paint scheme  
Window treatments  
Appliance upgrades

ONE MARINA

info@onemarinahomes.com • onemarinahomes.com

650.369.3500

Exclusively represented by Polaris Group  
A California licensed broker. DRE 01499250

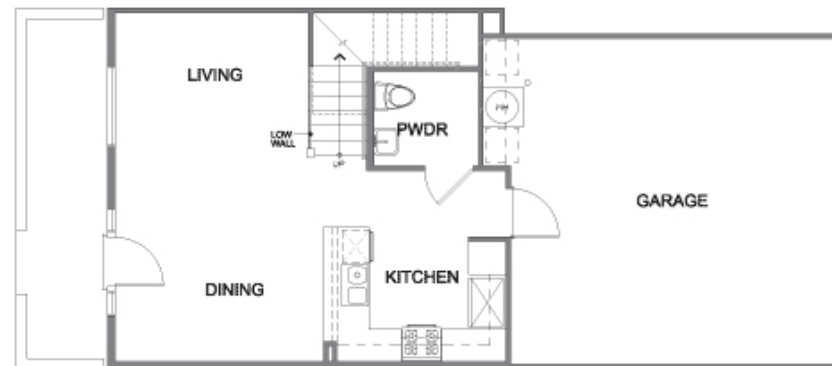


Floorplans are conceptual only. They should not be relied upon as representations, express or implied. The developer reserves the right to change plans, elevations, materials and specifications without prior notice. Deck size and configurations vary per home. Revised March 2012. ©2012 The Pauls Corporation.

4



MAIN LEVEL



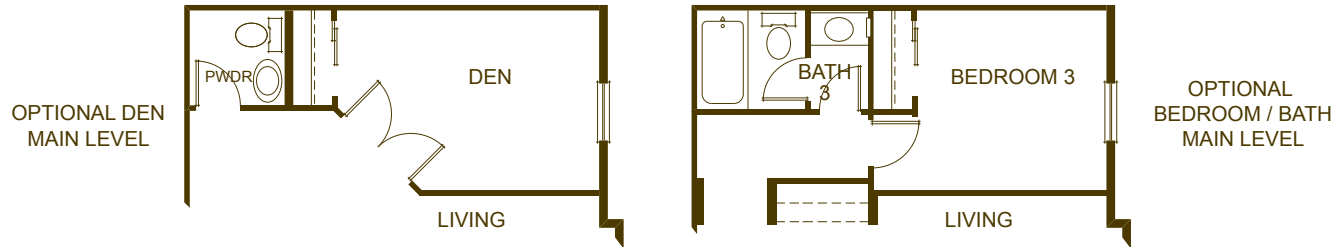
LOWER LEVEL

# ONE MARINA

One waterfront location, one great place to live.

2 Bedrooms  
2.5 Baths

5





# FEATURES LIST

## HOME

8' Therma-Tru® fiberglass entry door  
Satin nickel entry door hardware  
Ceramic 12"x12" entry tile  
Carpet throughout living room, dining room,  
stairs and bedroom areas  
8' two-panel interior doors  
Satin nickel lever interior door hardware  
Laundry room (washer and dryer optional)  
Tech space (per plan)  
Decora light switches  
Phone/Cat 5 in kitchen, family/living room, bedrooms  
and tech space; cable in family room and bedrooms  
Security system pre-wire at operable doors at entry  
level, with key pad pre-wire at garage entrance door  
Pre-wired for dual-zone air conditioning  
(air conditioning system is optional)  
9' ceilings or higher throughout (per plan)  
White vinyl dual pane, low-E windows  
2-car attached garage with EasyLift belt driven  
automatic garage opener  
Tankless hot water heaters

## BATHROOMS

6"x 6" tile countertops  
Mid-Continent® Bayfield Oak Cabinetry  
Kohler® dual sinks at vanity in master baths  
Moen® chrome plumbing fixtures  
Separate shower and Sterling soaking tub (per plan)  
Private water closet with elongated toilet  
in master baths  
Pedestal sink in powder room with elongated  
toilet (per plan)  
Vinyl flooring

## KITCHEN

Whirlpool® stainless steel appliances

- 30" 4-burner, continuous grate gas cooktop
- 30" electric, self-cleaning, under-counter oven
- Built-in microwave/hood combo
- 4-cycle Energy Star dishwasher

6"x 6" tile countertops with 6" backsplash  
Vinyl flooring  
Moen chrome faucet  
Kohler white cast iron double bowl sink  
½ horsepower disposal  
Mid-Continent Bayfield Oak Cabinetry  
Kitchen islands (per plan)

## UPGRADES & OPTIONS

We have an extensive options and upgrades program. Please see a sales associate for details.

Alarm system  
Air conditioning  
Lighting upgrades  
Home theatre upgrades  
Cabinet upgrades  
Countertop upgrades  
Flooring upgrades  
Plumbing fixture upgrades  
Designer interior paint scheme  
Window treatments  
Appliance upgrades

ONE MARINA

info@onemarinahomes.com • onemarinahomes.com

650.369.3500

Exclusively represented by Polaris Group  
A California licensed broker. DRE 01499250



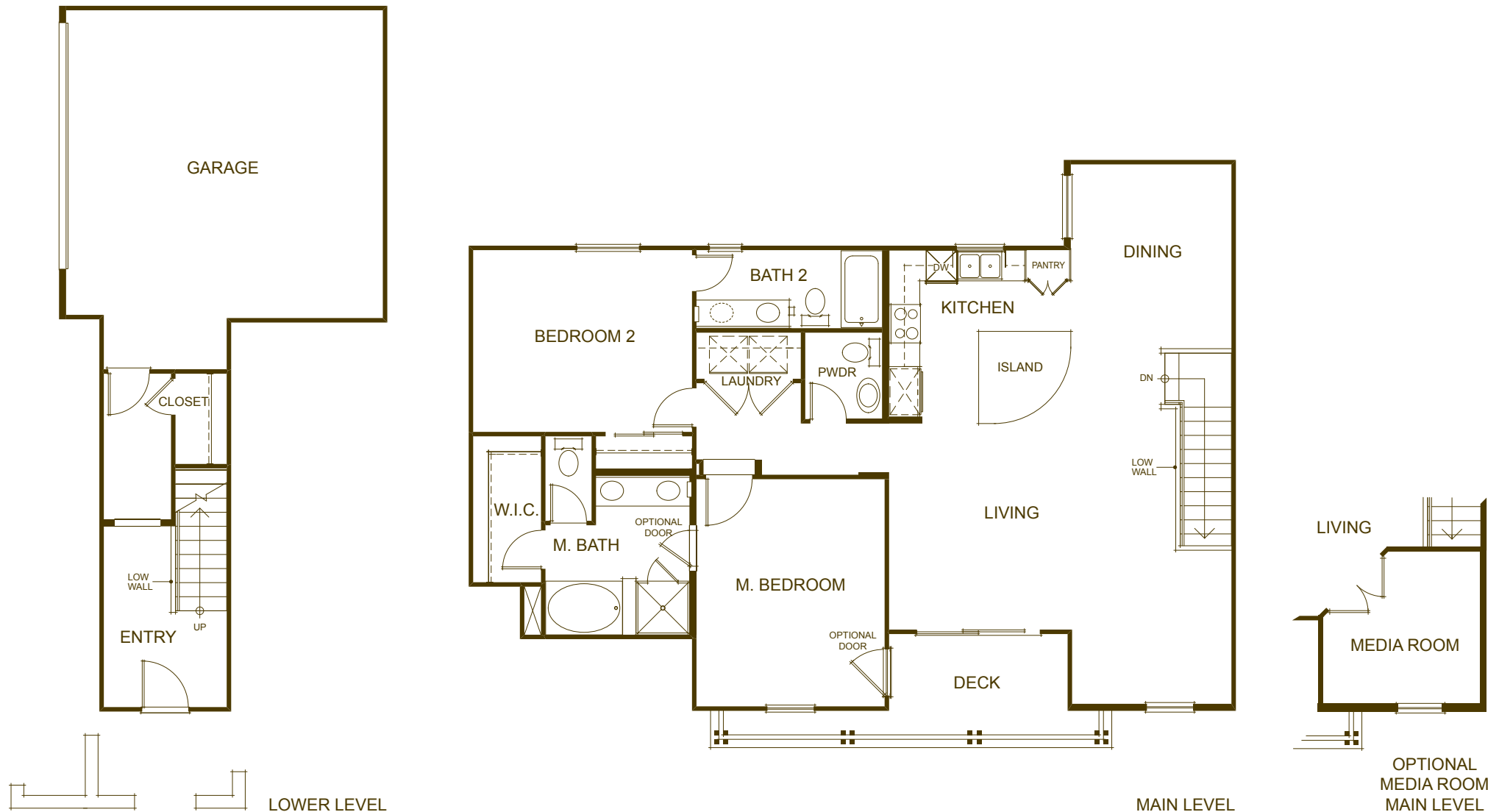
Floorplans are conceptual only. They should not be relied upon as representations, express or implied. The developer reserves the right to change plans, elevations, materials and specifications without prior notice. Deck size and configurations vary per home. Revised March 2012. ©2012 The Pauls Corporation.

# ONE MARINA

One waterfront location, one great place to live.

2 Bedrooms  
2.5 Baths

6



# FEATURES LIST

## HOME

8' Therma-Tru® fiberglass entry door  
Satin nickel entry door hardware  
Ceramic 12"x12" entry tile  
Carpet throughout living room, dining room,  
stairs and bedroom areas  
8' two-panel interior doors  
Satin nickel lever interior door hardware  
Laundry room (washer and dryer optional)  
Tech space (per plan)  
Decora light switches  
Phone/Cat 5 in kitchen, family/living room, bedrooms  
and tech space; cable in family room and bedrooms  
Security system pre-wire at operable doors at entry  
level, with key pad pre-wire at garage entrance door  
Pre-wired for dual-zone air conditioning  
(air conditioning system is optional)  
9' ceilings or higher throughout (per plan)  
White vinyl dual pane, low-E windows  
2-car attached garage with EasyLift belt driven  
automatic garage opener  
Tankless hot water heaters

## BATHROOMS

6"x 6" tile countertops  
Mid-Continent® Bayfield Oak Cabinetry  
Kohler® dual sinks at vanity in master baths  
Moen® chrome plumbing fixtures  
Separate shower and Sterling soaking tub (per plan)  
Private water closet with elongated toilet  
in master baths  
Pedestal sink in powder room with elongated  
toilet (per plan)  
Vinyl flooring

## KITCHEN

Whirlpool® stainless steel appliances

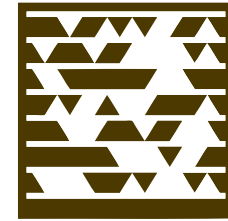
- 30" 4-burner, continuous grate gas cooktop
- 30" electric, self-cleaning, under-counter oven
- Built-in microwave/hood combo
- 4-cycle Energy Star dishwasher

6"x 6" tile countertops with 6" backsplash  
Vinyl flooring  
Moen chrome faucet  
Kohler white cast iron double bowl sink  
½ horsepower disposal  
Mid-Continent Bayfield Oak Cabinetry  
Kitchen islands (per plan)

## UPGRADES & OPTIONS

We have an extensive options and upgrades program. Please see a sales associate for details.

Alarm system  
Air conditioning  
Lighting upgrades  
Home theatre upgrades  
Cabinet upgrades  
Countertop upgrades  
Flooring upgrades  
Plumbing fixture upgrades  
Designer interior paint scheme  
Window treatments  
Appliance upgrades



## TAKE A VIDEO TOUR OF PLAN 6

Gettag.mobi from your mobile device

# ONE MARINA

info@onemarinahomes.com • onemarinahomes.com  
650.369.3500

Exclusively represented by Polaris Group  
A California licensed broker. DRE 01499250

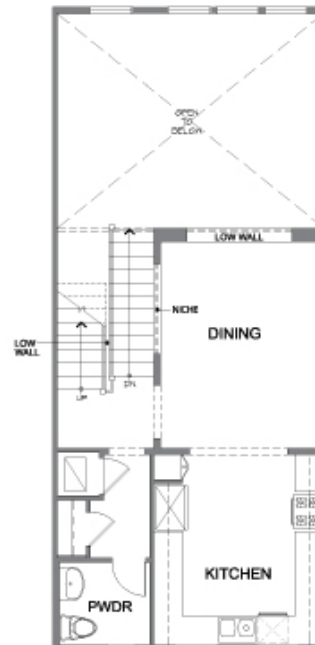


Floorplans are conceptual only. They should not be relied upon as representations, express or implied. The developer reserves the right to change plans, elevations, materials and specifications without prior notice. Deck size and configurations vary per home. Revised March 2012. ©2012 The Pauls Corporation.

7



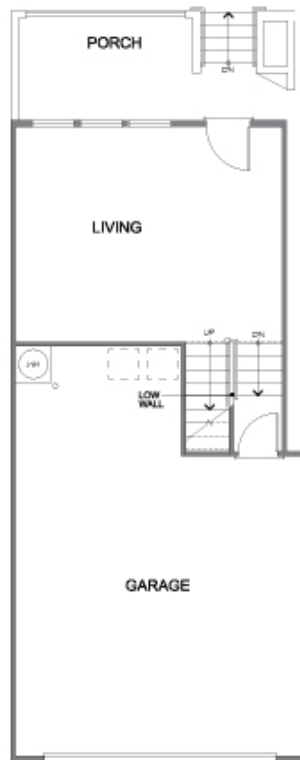
LOWER LEVEL



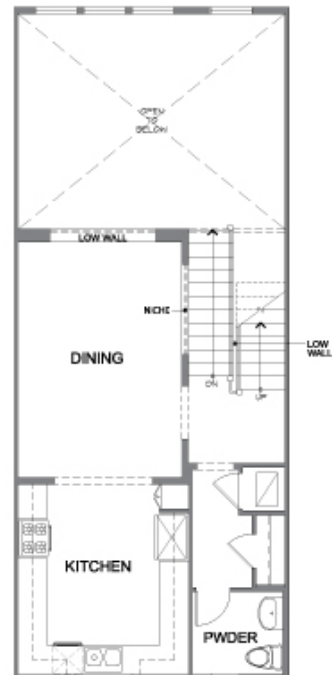
MAIN LEVEL



UPPER LEVEL



LOWER LEVEL



MAIN LEVEL



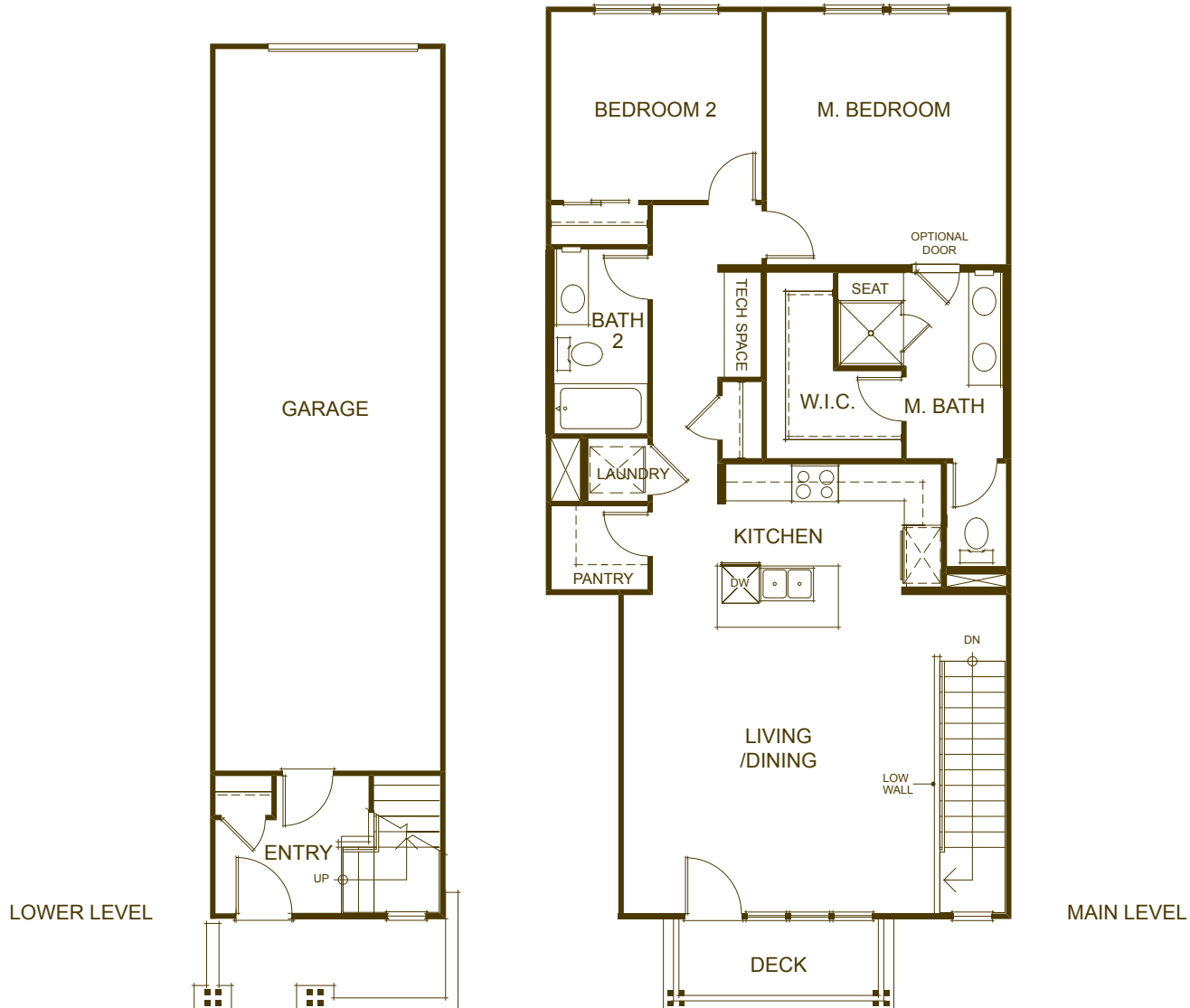
UPPER LEVEL

# ONE MARINA

One waterfront location, one great place to live.

2 Bedrooms  
2 Baths

9



# FEATURES LIST

## HOME

8' Therma-Tru® fiberglass entry door  
Satin nickel entry door hardware  
Ceramic 12"x12" entry tile  
Carpet throughout living room, dining room,  
stairs and bedroom areas  
8' two-panel interior doors  
Satin nickel lever interior door hardware  
Laundry room (washer and dryer optional)  
Tech space (per plan)  
Decora light switches  
Phone/Cat 5 in kitchen, family/living room, bedrooms  
and tech space; cable in family room and bedrooms  
Security system pre-wire at operable doors at entry  
level, with key pad pre-wire at garage entrance door  
Pre-wired for dual-zone air conditioning  
(air conditioning system is optional)  
9' ceilings or higher throughout (per plan)  
White vinyl dual pane, low-E windows  
2-car attached garage with EasyLift belt driven  
automatic garage opener  
Tankless hot water heaters

## BATHROOMS

6"x 6" tile countertops  
Mid-Continent® Bayfield Oak Cabinetry  
Kohler® dual sinks at vanity in master baths  
Moen® chrome plumbing fixtures  
Separate shower and Sterling soaking tub (per plan)  
Private water closet with elongated toilet  
in master baths  
Pedestal sink in powder room with elongated  
toilet (per plan)  
Vinyl flooring

## KITCHEN

Whirlpool® stainless steel appliances

- 30" 4-burner, continuous grate gas cooktop
- 30" electric, self-cleaning, under-counter oven
- Built-in microwave/hood combo
- 4-cycle Energy Star dishwasher

6"x 6" tile countertops with 6" backsplash  
Vinyl flooring  
Moen chrome faucet  
Kohler white cast iron double bowl sink  
½ horsepower disposal  
Mid-Continent Bayfield Oak Cabinetry  
Kitchen islands (per plan)

## UPGRADES & OPTIONS

We have an extensive options and upgrades program. Please see a sales associate for details.

Alarm system  
Air conditioning  
Lighting upgrades  
Home theatre upgrades  
Cabinet upgrades  
Countertop upgrades  
Flooring upgrades  
Plumbing fixture upgrades  
Designer interior paint scheme  
Window treatments  
Appliance upgrades

ONE MARINA

info@onemarinahomes.com • onemarinahomes.com  
650.369.3500

Exclusively represented by Polaris Group  
A California licensed broker. DRE 01499250



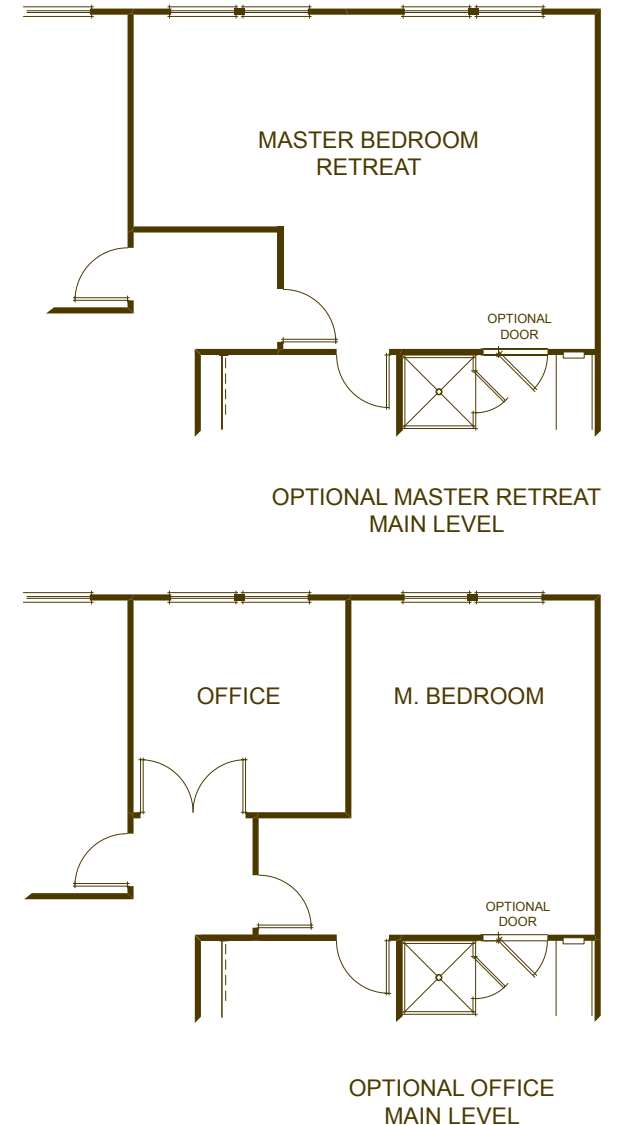
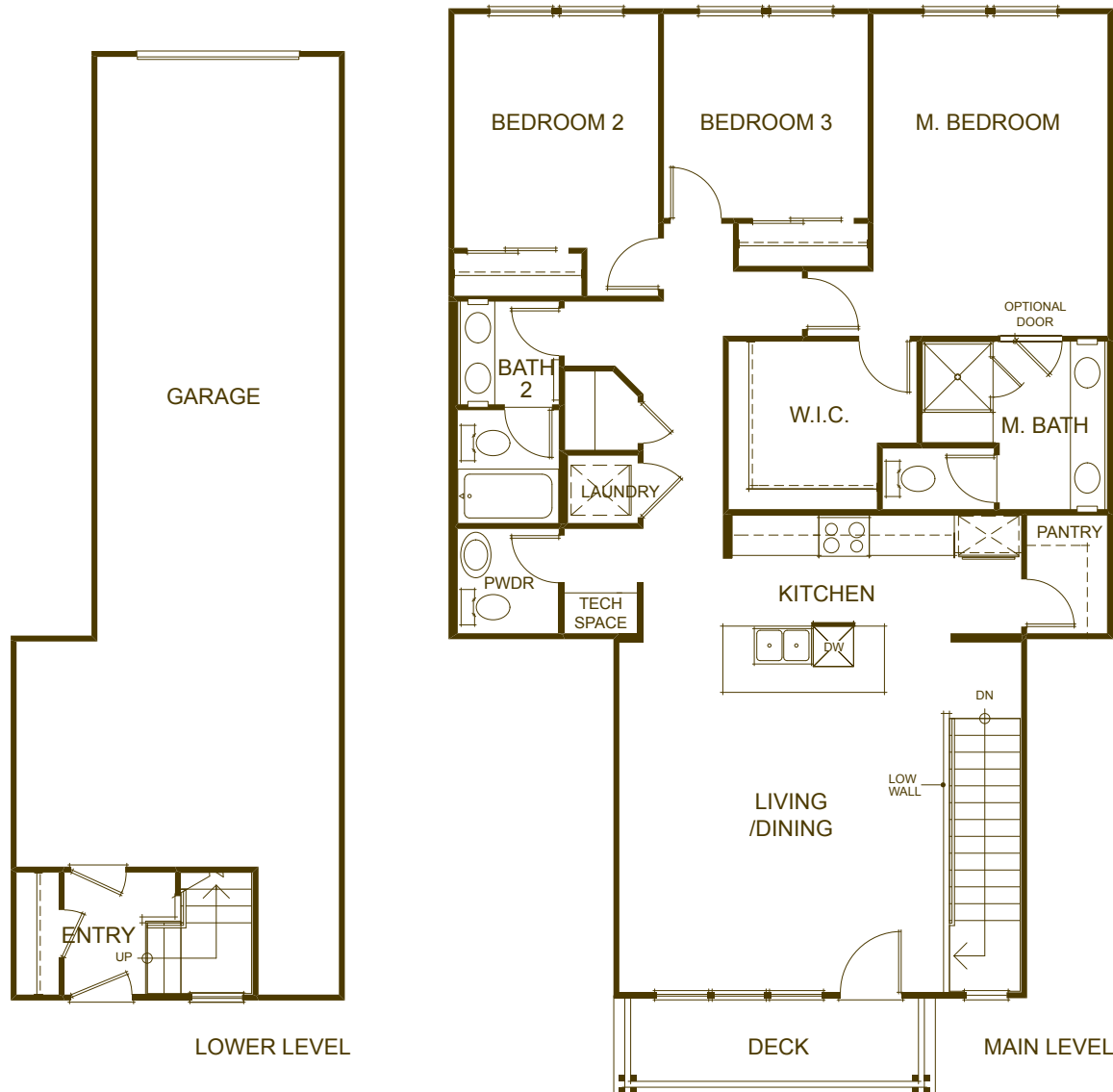
Floorplans are conceptual only. They should not be relied upon as representations, express or implied. The developer reserves the right to change plans, elevations, materials and specifications without prior notice. Deck size and configurations vary per home. Revised March 2012. ©2012 The Pauls Corporation.

# ONE MARINA

One waterfront location, one great place to live.

3 Bedrooms  
2.5 Baths

10





# FEATURES LIST

## HOME

8' Therma-Tru® fiberglass entry door  
Satin nickel entry door hardware  
Ceramic 12"x12" entry tile  
Carpet throughout living room, dining room,  
stairs and bedroom areas  
8' two-panel interior doors  
Satin nickel lever interior door hardware  
Laundry room (washer and dryer optional)  
Tech space (per plan)  
Decora light switches  
Phone/Cat 5 in kitchen, family/living room, bedrooms  
and tech space; cable in family room and bedrooms  
Security system pre-wire at operable doors at entry  
level, with key pad pre-wire at garage entrance door  
Pre-wired for dual-zone air conditioning  
(air conditioning system is optional)  
9' ceilings or higher throughout (per plan)  
White vinyl dual pane, low-E windows  
2-car attached garage with EasyLift belt driven  
automatic garage opener  
Tankless hot water heaters

## BATHROOMS

6"x 6" tile countertops  
Mid-Continent® Bayfield Oak Cabinetry  
Kohler® dual sinks at vanity in master baths  
Moen® chrome plumbing fixtures  
Separate shower and Sterling soaking tub (per plan)  
Private water closet with elongated toilet  
in master baths  
Pedestal sink in powder room with elongated  
toilet (per plan)  
Vinyl flooring

## KITCHEN

Whirlpool® stainless steel appliances

- 30" 4-burner, continuous grate gas cooktop
- 30" electric, self-cleaning, under-counter oven
- Built-in microwave/hood combo
- 4-cycle Energy Star dishwasher

6"x 6" tile countertops with 6" backsplash  
Vinyl flooring  
Moen chrome faucet  
Kohler white cast iron double bowl sink  
½ horsepower disposal  
Mid-Continent Bayfield Oak Cabinetry  
Kitchen islands (per plan)

## UPGRADES & OPTIONS

We have an extensive options and upgrades program. Please see a sales associate for details.

Alarm system  
Air conditioning  
Lighting upgrades  
Home theatre upgrades  
Cabinet upgrades  
Countertop upgrades  
Flooring upgrades  
Plumbing fixture upgrades  
Designer interior paint scheme  
Window treatments  
Appliance upgrades

ONE MARINA

info@onemarinahomes.com • onemarinahomes.com  
650.369.3500

Exclusively represented by Polaris Pacific  
A California licensed broker. DRE 01499250



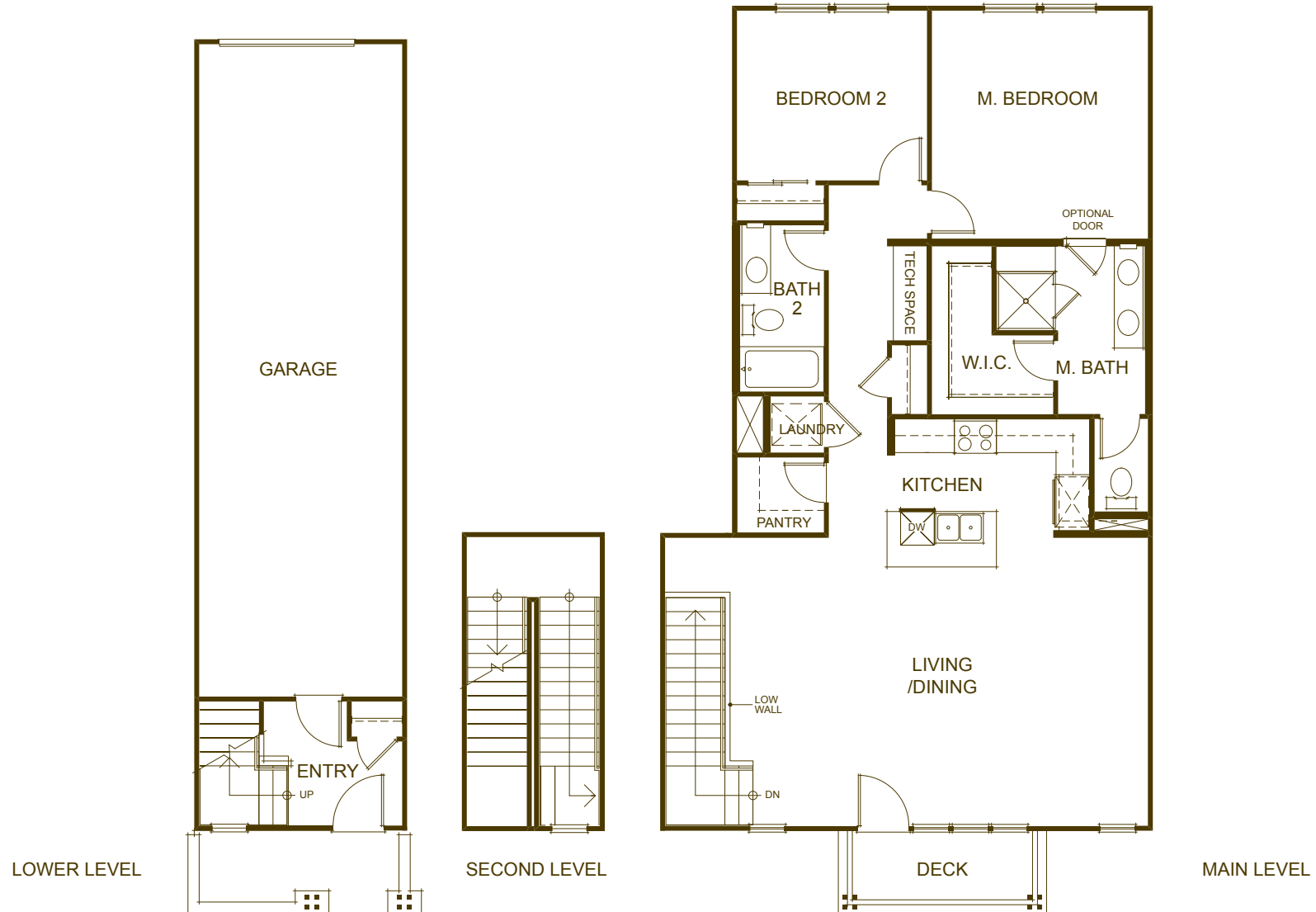
Floorplans are conceptual only. They should not be relied upon as representations, express or implied. The developer reserves the right to change plans, elevations, materials and specifications without prior notice. Deck size and configurations vary per home. Revised April 2013. ©2013 The Pauls Corporation.

# ONE MARINA

One waterfront location, one great place to live.

2 Bedrooms  
2 Baths

11



# FEATURES LIST

## HOME

8' Therma-Tru® fiberglass entry door  
Satin nickel entry door hardware  
Ceramic 12"x12" entry tile  
Carpet throughout living room, dining room,  
stairs and bedroom areas  
8' two-panel interior doors  
Satin nickel lever interior door hardware  
Laundry room (washer and dryer optional)  
Tech space (per plan)  
Decora light switches  
Phone/Cat 5 in kitchen, family/living room, bedrooms  
and tech space; cable in family room and bedrooms  
Security system pre-wire at operable doors at entry  
level, with key pad pre-wire at garage entrance door  
Pre-wired for dual-zone air conditioning  
(air conditioning system is optional)  
9' ceilings or higher throughout (per plan)  
White vinyl dual pane, low-E windows  
2-car attached garage with EasyLift belt driven  
automatic garage opener  
Tankless hot water heaters

## BATHROOMS

6"x 6" tile countertops  
Mid-Continent® Bayfield Oak Cabinetry  
Kohler® dual sinks at vanity in master baths  
Moen® chrome plumbing fixtures  
Separate shower and Sterling soaking tub (per plan)  
Private water closet with elongated toilet  
in master baths  
Pedestal sink in powder room with elongated  
toilet (per plan)  
Vinyl flooring

## KITCHEN

Whirlpool® stainless steel appliances

- 30" 4-burner, continuous grate gas cooktop
- 30" electric, self-cleaning, under-counter oven
- Built-in microwave/hood combo
- 4-cycle Energy Star dishwasher

6"x 6" tile countertops with 6" backsplash  
Vinyl flooring  
Moen chrome faucet  
Kohler white cast iron double bowl sink  
½ horsepower disposal  
Mid-Continent Bayfield Oak Cabinetry  
Kitchen islands (per plan)

## UPGRADES & OPTIONS

We have an extensive options and upgrades program. Please see a sales associate for details.

Alarm system  
Air conditioning  
Lighting upgrades  
Home theatre upgrades  
Cabinet upgrades  
Countertop upgrades  
Flooring upgrades  
Plumbing fixture upgrades  
Designer interior paint scheme  
Window treatments  
Appliance upgrades

ONE MARINA

info@onemarinahomes.com • onemarinahomes.com  
650.369.3500

Exclusively represented by Polaris Group  
A California licensed broker. DRE 01499250



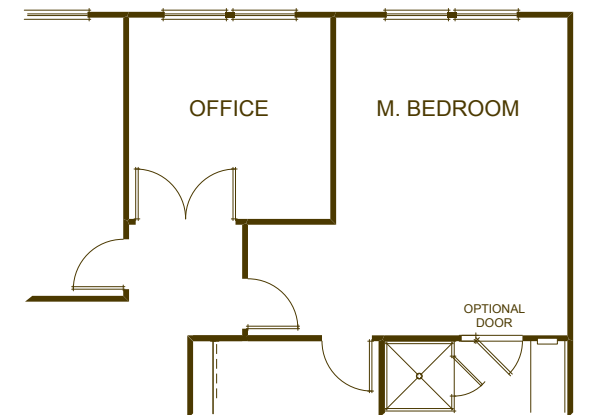
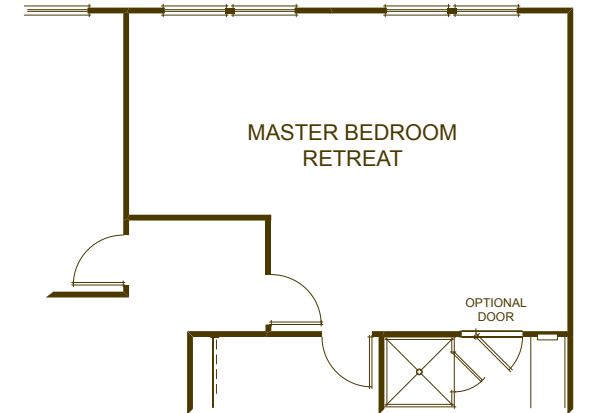
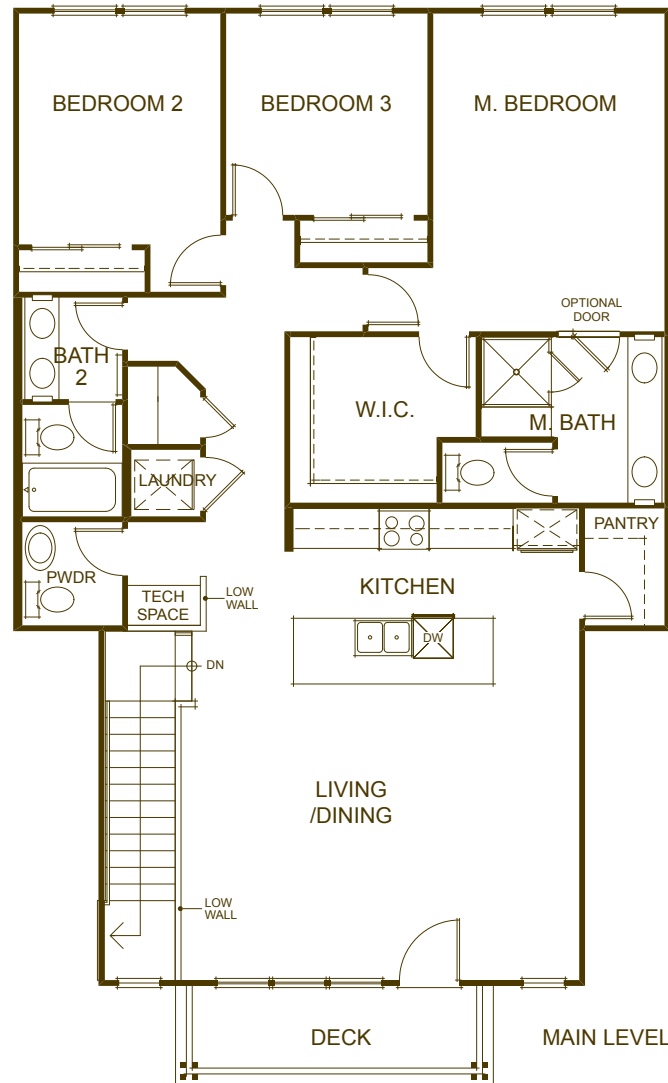
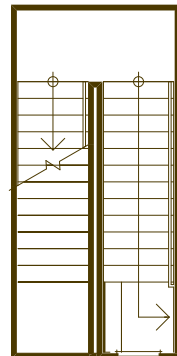
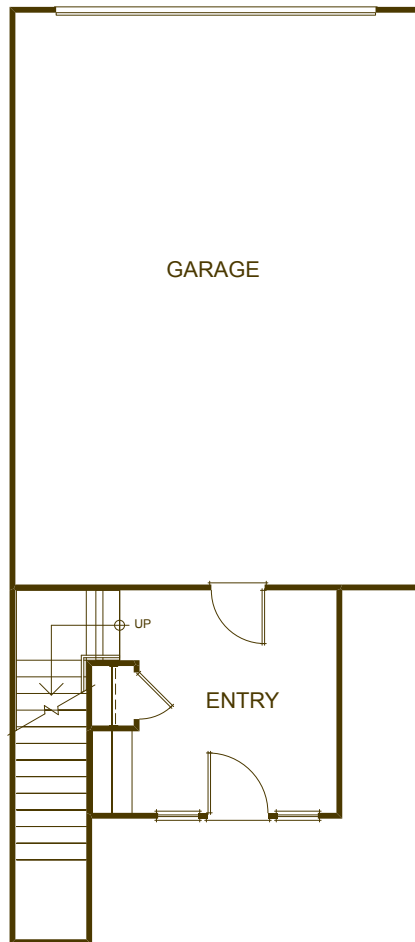
Floorplans are conceptual only. They should not be relied upon as representations, express or implied. The developer reserves the right to change plans, elevations, materials and specifications without prior notice. Deck size and configurations vary per home. Revised March 2012. ©2012 The Pauls Corporation.

# ONE MARINA

One waterfront location, one great place to live.

3 Bedrooms  
2.5 Baths

12



# FEATURES LIST

## HOME

8' Therma-Tru® fiberglass entry door  
Satin nickel entry door hardware  
Ceramic 12"x12" entry tile  
Carpet throughout living room, dining room,  
stairs and bedroom areas  
8' two-panel interior doors  
Satin nickel lever interior door hardware  
Laundry room (washer and dryer optional)  
Tech space (per plan)  
Decora light switches  
Phone/Cat 5 in kitchen, family/living room, bedrooms  
and tech space; cable in family room and bedrooms  
Security system pre-wire at operable doors at entry  
level, with key pad pre-wire at garage entrance door  
Pre-wired for dual-zone air conditioning  
(air conditioning system is optional)  
9' ceilings or higher throughout (per plan)  
White vinyl dual pane, low-E windows  
2-car attached garage with EasyLift belt driven  
automatic garage opener  
Tankless hot water heaters

## BATHROOMS

6"x 6" tile countertops  
Mid-Continent® Bayfield Oak Cabinetry  
Kohler® dual sinks at vanity in master baths  
Moen® chrome plumbing fixtures  
Separate shower and Sterling soaking tub (per plan)  
Private water closet with elongated toilet  
in master baths  
Pedestal sink in powder room with elongated  
toilet (per plan)  
Vinyl flooring

## KITCHEN

Whirlpool® stainless steel appliances

- 30" 4-burner, continuous grate gas cooktop
- 30" electric, self-cleaning, under-counter oven
- Built-in microwave/hood combo
- 4-cycle Energy Star dishwasher

6"x 6" tile countertops with 6" backsplash  
Vinyl flooring  
Moen chrome faucet  
Kohler white cast iron double bowl sink  
½ horsepower disposal  
Mid-Continent Bayfield Oak Cabinetry  
Kitchen islands (per plan)

## UPGRADES & OPTIONS

We have an extensive options and upgrades program. Please see a sales associate for details.

Alarm system  
Air conditioning  
Lighting upgrades  
Home theatre upgrades  
Cabinet upgrades  
Countertop upgrades  
Flooring upgrades  
Plumbing fixture upgrades  
Designer interior paint scheme  
Window treatments  
Appliance upgrades

ONE MARINA

info@onemarinahomes.com • onemarinahomes.com

650.369.3500

Exclusively represented by Polaris Group  
A California licensed broker. DRE 01499250



Floorplans are conceptual only. They should not be relied upon as representations, express or implied. The developer reserves the right to change plans, elevations, materials and specifications without prior notice. Deck size and configurations vary per home. Revised March 2012. ©2012 The Pauls Corporation.

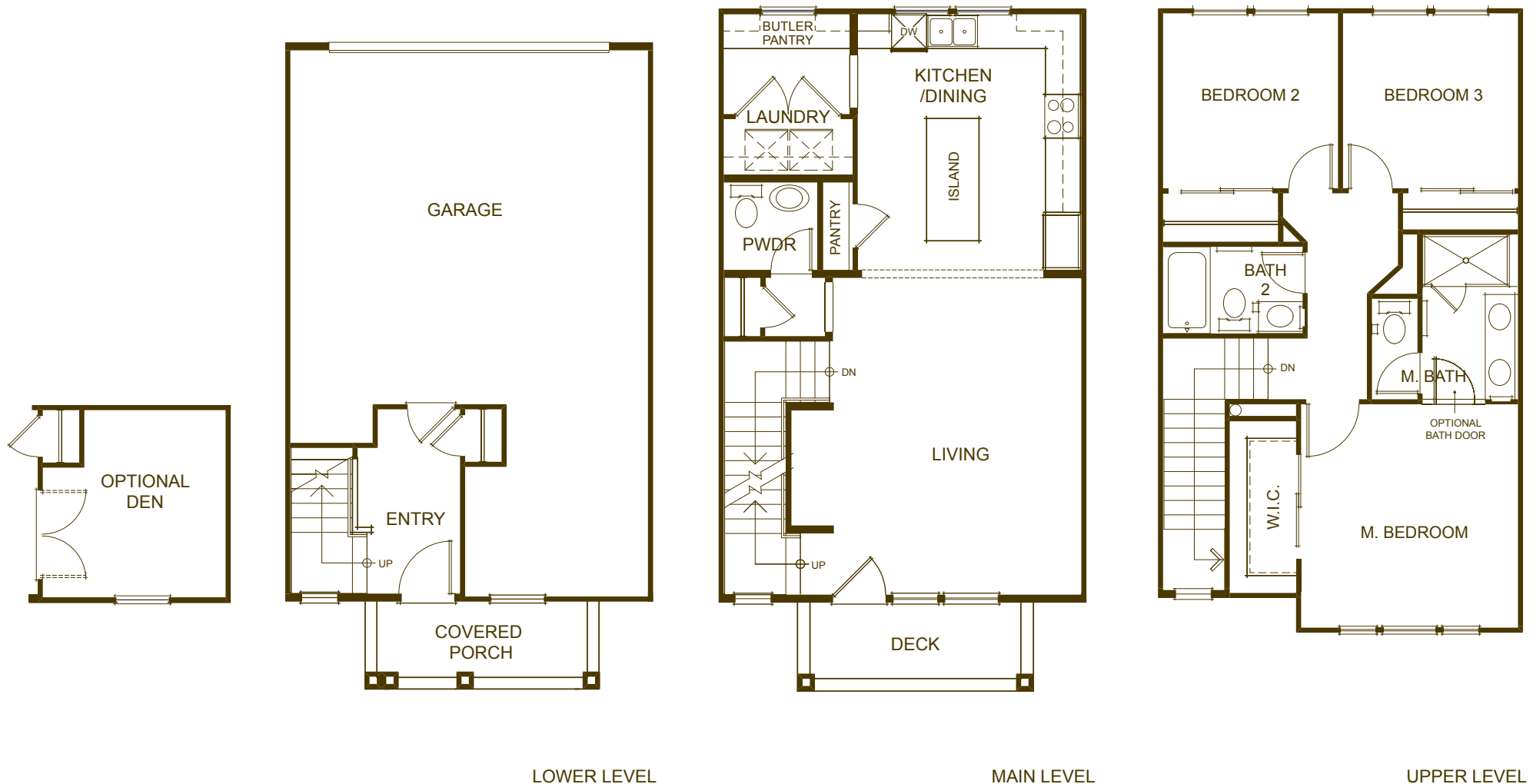
# ONE MARINA

One waterfront location, one great place to live.

3 Bedrooms

2.5 Baths

B



# FEATURES LIST

## HOME

8' Therma-Tru® fiberglass entry door  
Satin nickel entry door hardware  
Ceramic 12"x12" entry tile  
Carpet throughout living room, dining room,  
stairs and bedroom areas  
8' two-panel interior doors  
Satin nickel lever interior door hardware  
Laundry room (washer and dryer optional)  
Tech space (per plan)  
Decora light switches  
Phone/Cat 5 in kitchen, family/living room, bedrooms  
and tech space; cable in family room and bedrooms  
Security system pre-wire at operable doors at entry  
level, with key pad pre-wire at garage entrance door  
Pre-wired for dual-zone air conditioning  
(air conditioning system is optional)  
9' ceilings or higher throughout (per plan)  
White vinyl dual pane, low-E windows  
2-car attached garage with EasyLift belt driven  
automatic garage opener  
Tankless hot water heaters

## BATHROOMS

6"x 6" tile countertops  
Mid-Continent® Bayfield Oak Cabinetry  
Kohler® dual sinks at vanity in master baths  
Moen® chrome plumbing fixtures  
Separate shower and Sterling soaking tub (per plan)  
Private water closet with elongated toilet  
in master baths  
Pedestal sink in powder room with elongated  
toilet (per plan)  
Vinyl flooring

## KITCHEN

Whirlpool® stainless steel appliances

- 30" 4-burner, continuous grate gas cooktop
- 30" electric, self-cleaning, under-counter oven
- Built-in microwave/hood combo
- 4-cycle Energy Star dishwasher

6"x 6" tile countertops with 6" backsplash  
Vinyl flooring  
Moen chrome faucet  
Kohler white cast iron double bowl sink  
½ horsepower disposal  
Mid-Continent Bayfield Oak Cabinetry  
Kitchen islands (per plan)

## UPGRADES & OPTIONS

We have an extensive options and upgrades program. Please see a sales associate for details.


Alarm system  
Air conditioning  
Lighting upgrades  
Home theatre upgrades  
Cabinet upgrades  
Countertop upgrades  
Flooring upgrades  
Plumbing fixture upgrades  
Designer interior paint scheme  
Window treatments  
Appliance upgrades

# ONE MARINA

info@onemarinahomes.com • onemarinahomes.com

650.369.3500

Exclusively represented by Polaris Pacific  
A California licensed broker. DRE 01499250

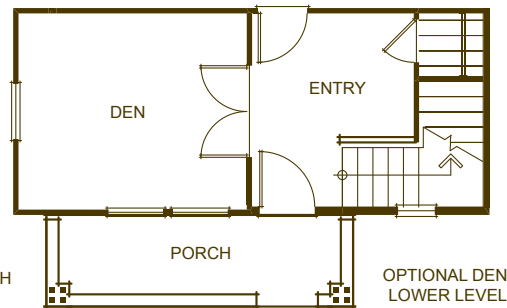
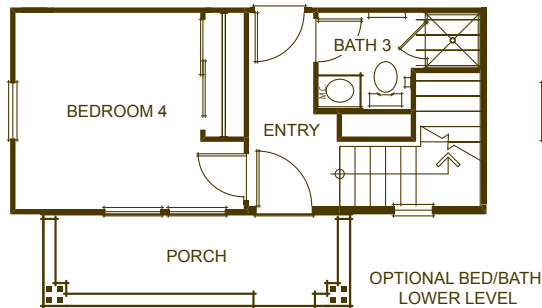
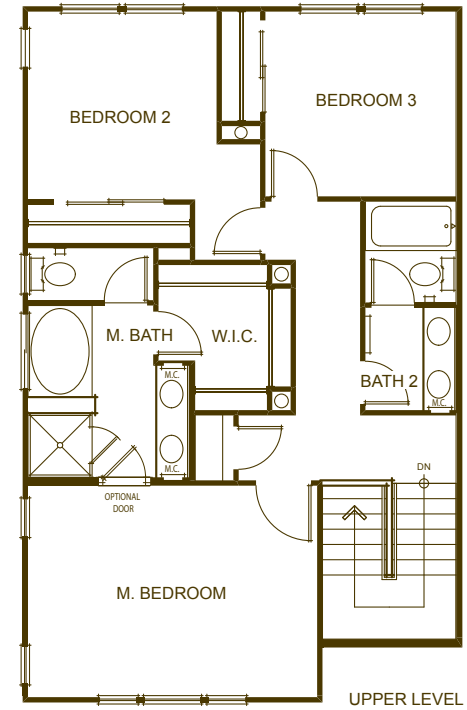
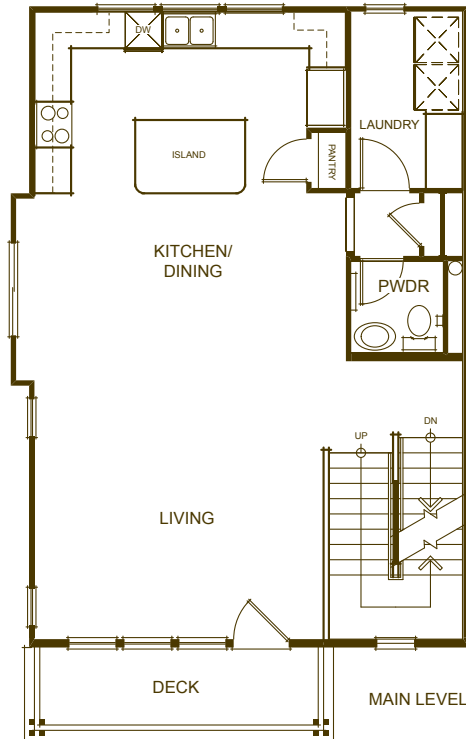
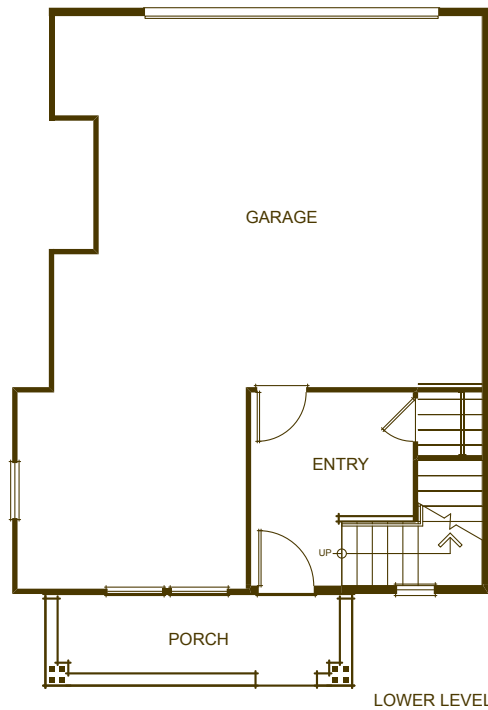
 Floorplans are conceptual only. They should not be relied upon as representations, express or implied. The developer reserves the right to change plans, elevations, materials and specifications without prior notice. Deck size and configurations vary per home. Revised January 2014. ©2014 The Pauls Corporation.

# ONE MARINA

One waterfront location, one great place to live.

3 Bedrooms  
2.5 Baths

C





# FEATURES LIST

## HOME

8' Therma-Tru® fiberglass entry door  
Satin nickel entry door hardware  
Ceramic 12"x12" entry tile  
Carpet throughout living room, dining room,  
stairs and bedroom areas  
8' two-panel interior doors  
Satin nickel lever interior door hardware  
Laundry room (washer and dryer optional)  
Tech space (per plan)  
Decora light switches  
Phone/Cat 5 in kitchen, family/living room, bedrooms  
and tech space; cable in family room and bedrooms  
Security system pre-wire at operable doors at entry  
level, with key pad pre-wire at garage entrance door  
Pre-wired for dual-zone air conditioning  
(air conditioning system is optional)  
9' ceilings or higher throughout (per plan)  
White vinyl dual pane, low-E windows  
2-car attached garage with EasyLift belt driven  
automatic garage opener  
Tankless hot water heaters

## BATHROOMS

6"x 6" tile countertops  
Mid-Continent® Bayfield Oak Cabinetry  
Kohler® dual sinks at vanity in master baths  
Moen® chrome plumbing fixtures  
Separate shower and Sterling soaking tub (per plan)  
Private water closet with elongated toilet  
in master baths  
Pedestal sink in powder room with elongated  
toilet (per plan)  
Vinyl flooring

## KITCHEN

Whirlpool® stainless steel appliances

- 30" 4-burner, continuous grate gas cooktop
- 30" electric, self-cleaning, under-counter oven
- Built-in microwave/hood combo
- 4-cycle Energy Star dishwasher

6"x 6" tile countertops with 6" backsplash  
Vinyl flooring  
Moen chrome faucet  
Kohler white cast iron double bowl sink  
½ horsepower disposal  
Mid-Continent Bayfield Oak Cabinetry  
Kitchen islands (per plan)

## UPGRADES & OPTIONS

We have an extensive options and upgrades program. Please see a sales associate for details.

Alarm system  
Air conditioning  
Lighting upgrades  
Home theatre upgrades  
Cabinet upgrades  
Countertop upgrades  
Flooring upgrades  
Plumbing fixture upgrades  
Designer interior paint scheme  
Window treatments  
Appliance upgrades

ONE MARINA

info@onemarinahomes.com • onemarinahomes.com

650.369.3500

Exclusively represented by Polaris Pacific  
A California licensed broker. DRE 01499250



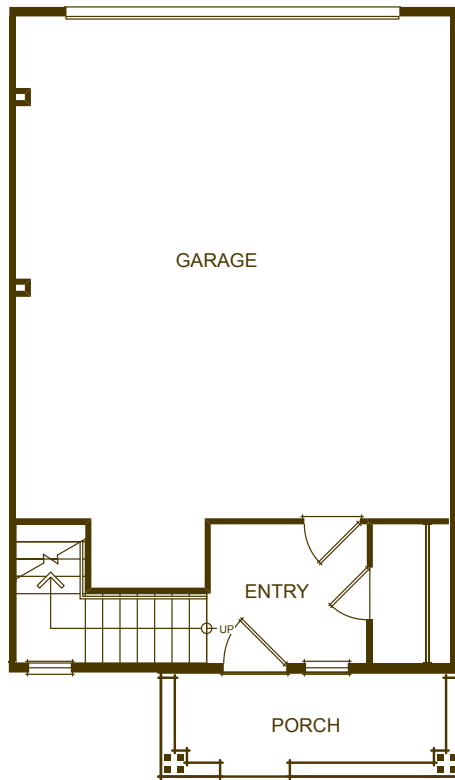
Floorplans are conceptual only. They should not be relied upon as representations, express or implied. The developer reserves the right to change plans, elevations, materials and specifications without prior notice. Deck size and configurations vary per home. Revised February 2013. ©2013 The Pauls Corporation.

# ONE MARINA

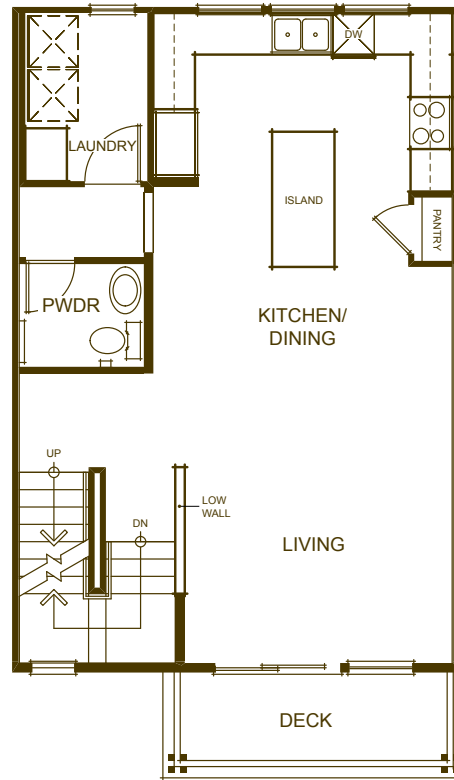
One waterfront location, one great place to live.

2 Bedrooms  
2.5 Baths

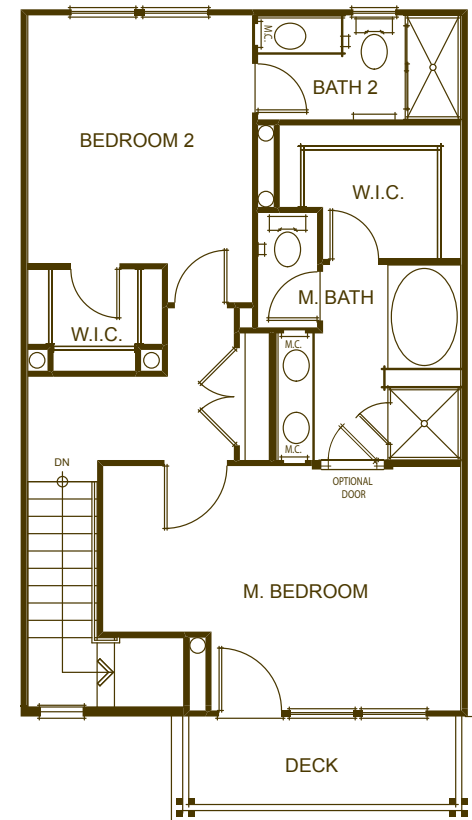
D



LOWER LEVEL



MAIN LEVEL



UPPER LEVEL

# FEATURES LIST

## HOME

8' Therma-Tru® fiberglass entry door  
Satin nickel entry door hardware  
Ceramic 12"x12" entry tile  
Carpet throughout living room, dining room,  
stairs and bedroom areas  
8' two-panel interior doors  
Satin nickel lever interior door hardware  
Laundry room (washer and dryer optional)  
Tech space (per plan)  
Decora light switches  
Phone/Cat 5 in kitchen, family/living room, bedrooms  
and tech space; cable in family room and bedrooms  
Security system pre-wire at operable doors at entry  
level, with key pad pre-wire at garage entrance door  
Pre-wired for dual-zone air conditioning  
(air conditioning system is optional)  
9' ceilings or higher throughout (per plan)  
White vinyl dual pane, low-E windows  
2-car attached garage with EasyLift belt driven  
automatic garage opener  
Tankless hot water heaters

## BATHROOMS

6"x 6" tile countertops  
Mid-Continent® Bayfield Oak Cabinetry  
Kohler® dual sinks at vanity in master baths  
Moen® chrome plumbing fixtures  
Separate shower and Sterling soaking tub (per plan)  
Private water closet with elongated toilet  
in master baths  
Pedestal sink in powder room with elongated  
toilet (per plan)  
Vinyl flooring

## KITCHEN

Whirlpool® stainless steel appliances

- 30" 4-burner, continuous grate gas cooktop
- 30" electric, self-cleaning, under-counter oven
- Built-in microwave/hood combo
- 4-cycle Energy Star dishwasher

6"x 6" tile countertops with 6" backsplash  
Vinyl flooring  
Moen chrome faucet  
Kohler white cast iron double bowl sink  
½ horsepower disposal  
Mid-Continent Bayfield Oak Cabinetry  
Kitchen islands (per plan)

## UPGRADES & OPTIONS

We have an extensive options and upgrades program. Please see a sales associate for details.

Alarm system  
Air conditioning  
Lighting upgrades  
Home theatre upgrades  
Cabinet upgrades  
Countertop upgrades  
Flooring upgrades  
Plumbing fixture upgrades  
Designer interior paint scheme  
Window treatments  
Appliance upgrades

# ONE MARINA

info@onemarinahomes.com • onemarinahomes.com  
650.369.3500

Exclusively represented by Polaris Pacific  
A California licensed broker. DRE 01499250



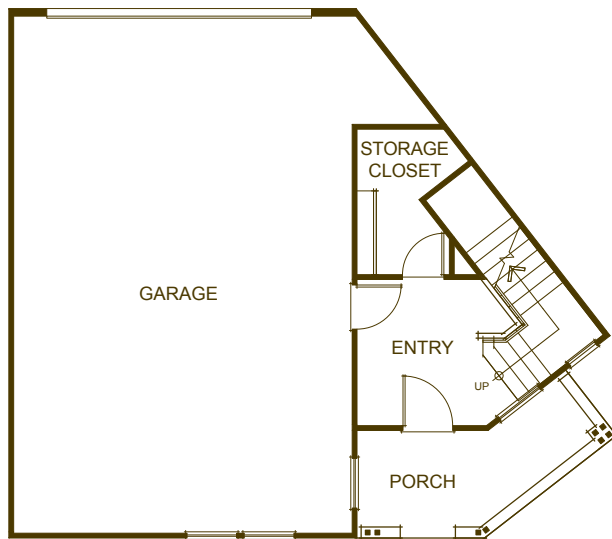
Floorplans are conceptual only. They should not be relied upon as representations, express or implied. The developer reserves the right to change plans, elevations, materials and specifications without prior notice. Deck size and configurations vary per home. Revised February 2013. ©2013 The Pauls Corporation.

# ONE MARINA

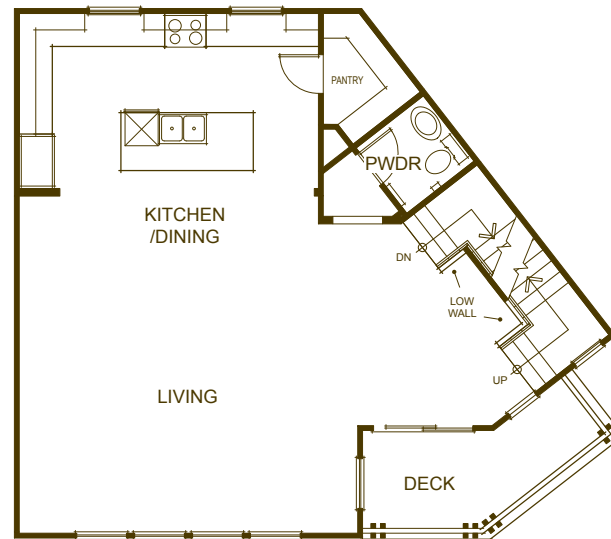
One waterfront location, one great place to live.

2 Bedrooms  
2.5 Baths

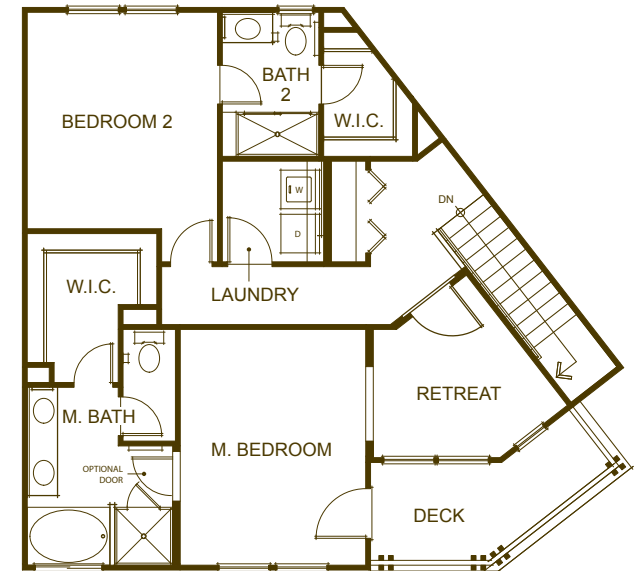
E



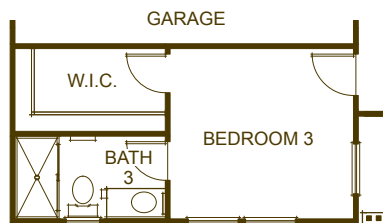
LOWER LEVEL



MAIN LEVEL



UPPER LEVEL



OPTIONAL BEDROOM

# FEATURES LIST

## HOME

8' Therma-Tru® fiberglass entry door  
Satin nickel entry door hardware  
Ceramic 12"x12" entry tile  
Carpet throughout living room, dining room,  
stairs and bedroom areas  
8' two-panel interior doors  
Satin nickel lever interior door hardware  
Laundry room (washer and dryer optional)  
Tech space (per plan)  
Decora light switches  
Phone/Cat 5 in kitchen, family/living room, bedrooms  
and tech space; cable in family room and bedrooms  
Security system pre-wire at operable doors at entry  
level, with key pad pre-wire at garage entrance door  
Pre-wired for dual-zone air conditioning  
(air conditioning system is optional)  
9' ceilings or higher throughout (per plan)  
White vinyl dual pane, low-E windows  
2-car attached garage with EasyLift belt driven  
automatic garage opener  
Tankless hot water heaters

## BATHROOMS

6"x 6" tile countertops  
Mid-Continent® Bayfield Oak Cabinetry  
Kohler® dual sinks at vanity in master baths  
Moen® chrome plumbing fixtures  
Separate shower and Sterling soaking tub (per plan)  
Private water closet with elongated toilet  
in master baths  
Pedestal sink in powder room with elongated  
toilet (per plan)  
Vinyl flooring

## KITCHEN

Whirlpool® stainless steel appliances

- 30" 4-burner, continuous grate gas cooktop
- 30" electric, self-cleaning, under-counter oven
- Built-in microwave/hood combo
- 4-cycle Energy Star dishwasher

6"x 6" tile countertops with 6" backsplash  
Vinyl flooring  
Moen chrome faucet  
Kohler white cast iron double bowl sink  
½ horsepower disposal  
Mid-Continent Bayfield Oak Cabinetry  
Kitchen islands (per plan)

## UPGRADES & OPTIONS

We have an extensive options and upgrades program. Please see a sales associate for details.

Alarm system  
Air conditioning  
Lighting upgrades  
Home theatre upgrades  
Cabinet upgrades  
Countertop upgrades  
Flooring upgrades  
Plumbing fixture upgrades  
Designer interior paint scheme  
Window treatments  
Appliance upgrades

ONE MARINA

info@onemarinahomes.com • onemarinahomes.com  
650.369.3500

Exclusively represented by Polaris Pacific  
A California licensed broker. DRE 01499250



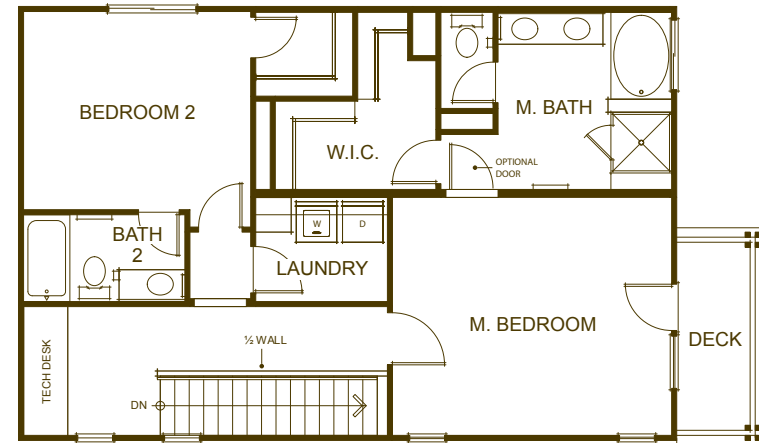
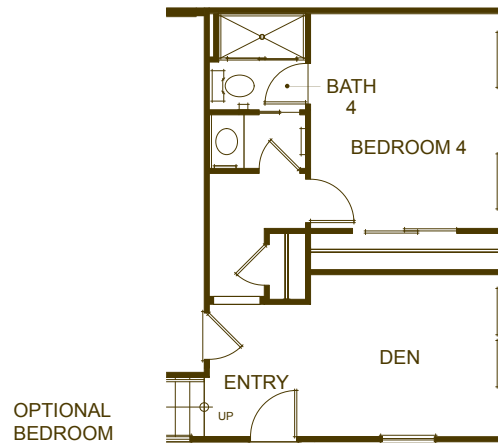
Floorplans are conceptual only. They should not be relied upon as representations, express or implied. The developer reserves the right to change plans, elevations, materials and specifications without prior notice. Deck size and configurations vary per home. Revised June 2013. ©2013 The Pauls Corporation.

# ONE MARINA

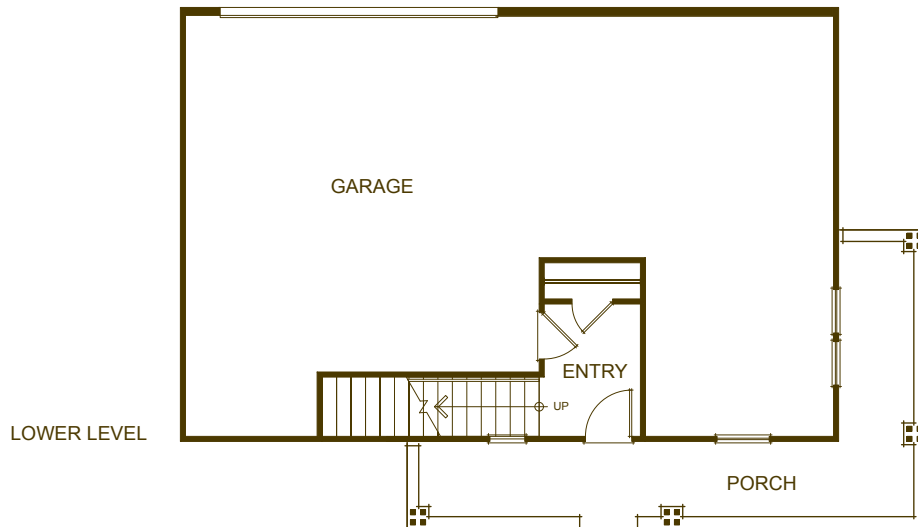
One waterfront location, one great place to live.

3 Bedrooms  
3 Baths

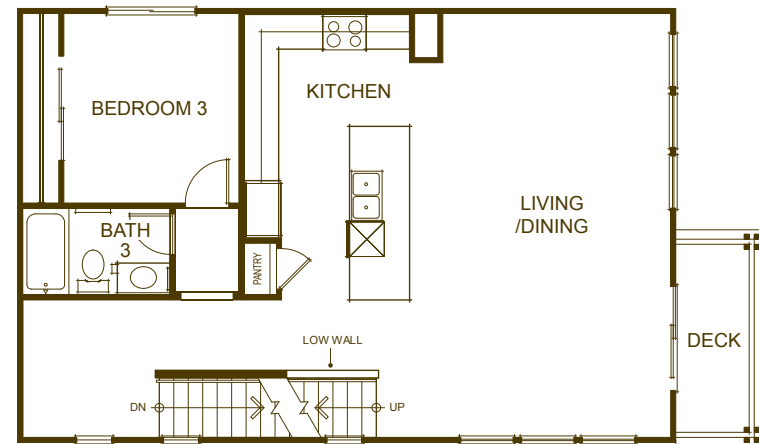
F



UPPER LEVEL



LOWER LEVEL



MAIN LEVEL

# FEATURES LIST

## HOME

8' Therma-Tru® fiberglass entry door  
Satin nickel entry door hardware  
Ceramic 12"x12" entry tile  
Carpet throughout living room, dining room,  
stairs and bedroom areas  
8' two-panel interior doors  
Satin nickel lever interior door hardware  
Laundry room (washer and dryer optional)  
Tech space (per plan)  
Decora light switches  
Phone/Cat 5 in kitchen, family/living room, bedrooms  
and tech space; cable in family room and bedrooms  
Security system pre-wire at operable doors at entry  
level, with key pad pre-wire at garage entrance door  
Pre-wired for dual-zone air conditioning  
(air conditioning system is optional)  
9' ceilings or higher throughout (per plan)  
White vinyl dual pane, low-E windows  
2-car attached garage with EasyLift belt driven  
automatic garage opener  
Tankless hot water heaters

## BATHROOMS

6"x 6" tile countertops  
Mid-Continent® Bayfield Oak Cabinetry  
Kohler® dual sinks at vanity in master baths  
Moen® chrome plumbing fixtures  
Separate shower and Sterling soaking tub (per plan)  
Private water closet with elongated toilet  
in master baths  
Pedestal sink in powder room with elongated  
toilet (per plan)  
Vinyl flooring

## KITCHEN

Whirlpool® stainless steel appliances

- 30" 4-burner, continuous grate gas cooktop
- 30" electric, self-cleaning, under-counter oven
- Built-in microwave/hood combo
- 4-cycle Energy Star dishwasher

6"x 6" tile countertops with 6" backsplash  
Vinyl flooring  
Moen chrome faucet  
Kohler white cast iron double bowl sink  
½ horsepower disposal  
Mid-Continent Bayfield Oak Cabinetry  
Kitchen islands (per plan)

## UPGRADES & OPTIONS

We have an extensive options and upgrades program. Please see a sales associate for details.

Alarm system  
Air conditioning  
Lighting upgrades  
Home theatre upgrades  
Cabinet upgrades  
Countertop upgrades  
Flooring upgrades  
Plumbing fixture upgrades  
Designer interior paint scheme  
Window treatments  
Appliance upgrades

ONE MARINA

info@onemarinahomes.com • onemarinahomes.com  
650.369.3500

Exclusively represented by Polaris Pacific  
A California licensed broker. DRE 01499250



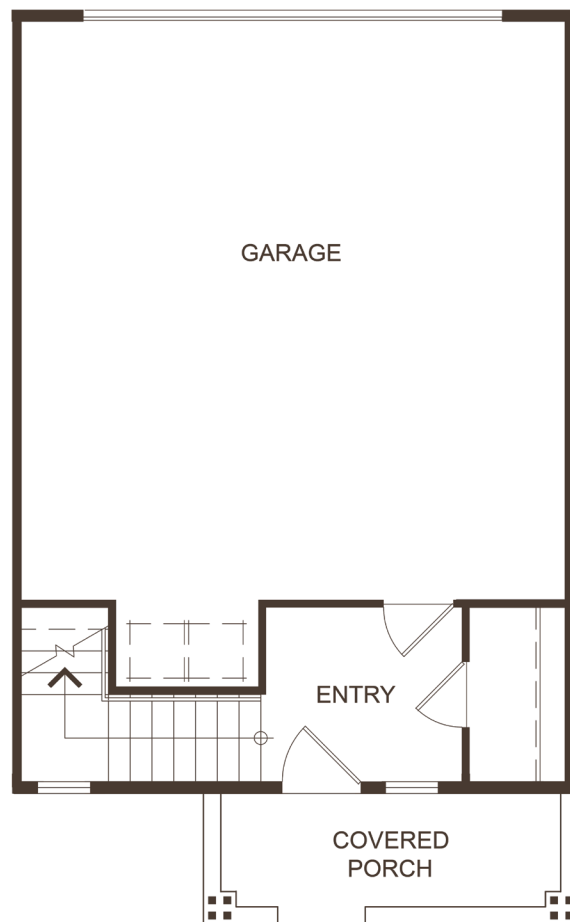
Floorplans are conceptual only. They should not be relied upon as representations, express or implied. The developer reserves the right to change plans, elevations, materials and specifications without prior notice. Deck size and configurations vary per home. Revised June 2013. ©2013 The Pauls Corporation.

# ONE MARINA

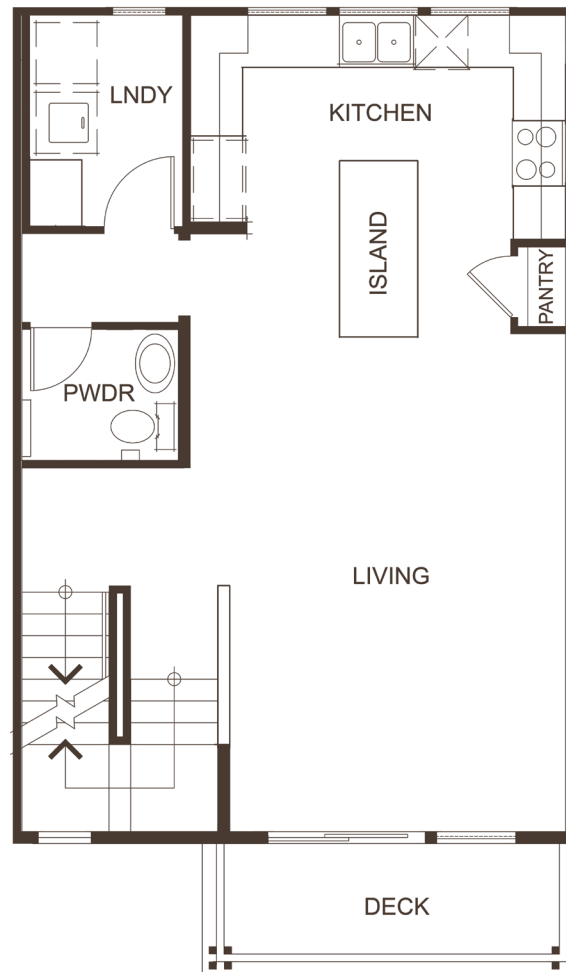
One waterfront location, one great place to live.

2 Bedrooms

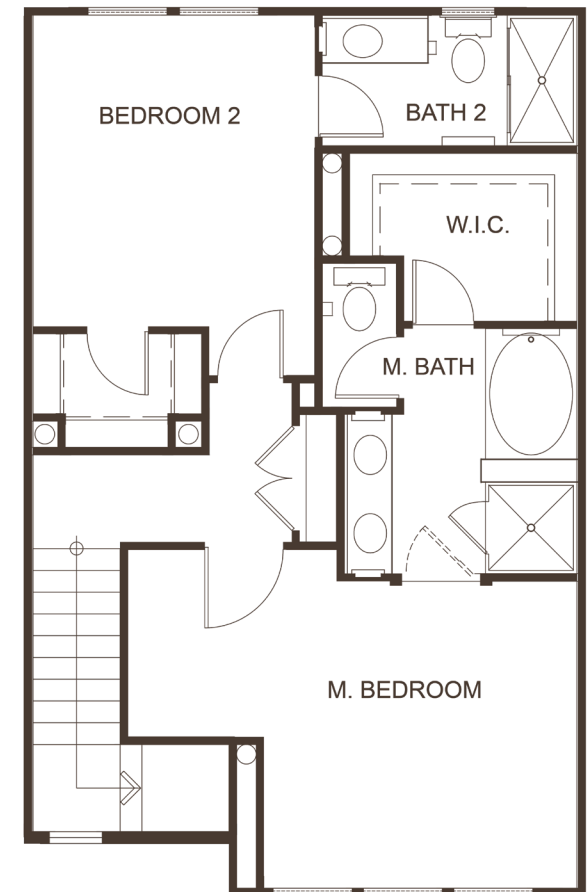
2.5 Baths



LOWER LEVEL



MAIN LEVEL



UPPER LEVEL



# FEATURES LIST

## HOME

8' Therma-Tru® fiberglass entry door  
Satin nickel entry door hardware  
Ceramic 12"x12" entry tile  
Carpet throughout living room, dining room,  
stairs and bedroom areas  
8' two-panel interior doors  
Satin nickel lever interior door hardware  
Laundry room (washer and dryer optional)  
Tech space (per plan)  
Decora light switches  
Phone/Cat 5 in kitchen, family/living room, bedrooms  
and tech space; cable in family room and bedrooms  
Security system pre-wire at operable doors at entry  
level, with key pad pre-wire at garage entrance door  
Pre-wired for dual-zone air conditioning  
(air conditioning system is optional)  
9' ceilings or higher throughout (per plan)  
White vinyl dual pane, low-E windows  
2-car attached garage with EasyLift belt driven  
automatic garage opener  
Tankless hot water heaters

## BATHROOMS

6"x 6" tile countertops  
Mid-Continent® Bayfield Oak Cabinetry  
Kohler® dual sinks at vanity in master baths  
Moen® chrome plumbing fixtures  
Separate shower and Sterling soaking tub (per plan)  
Private water closet with elongated toilet  
in master baths  
Pedestal sink in powder room with elongated  
toilet (per plan)  
Vinyl flooring

## KITCHEN

Whirlpool® stainless steel appliances

- 30" 4-burner, continuous grate gas cooktop
- 30" electric, self-cleaning, under-counter oven
- Built-in microwave/hood combo
- 4-cycle Energy Star dishwasher

6"x 6" tile countertops with 6" backsplash  
Vinyl flooring  
Moen chrome faucet  
Kohler white cast iron double bowl sink  
½ horsepower disposal  
Mid-Continent Bayfield Oak Cabinetry  
Kitchen islands (per plan)

## UPGRADES & OPTIONS

We have an extensive options and upgrades program. Please see a sales associate for details.


Alarm system  
Air conditioning  
Lighting upgrades  
Home theatre upgrades  
Cabinet upgrades  
Countertop upgrades  
Flooring upgrades  
Plumbing fixture upgrades  
Designer interior paint scheme  
Window treatments  
Appliance upgrades

# ONE MARINA

info@onemarinahomes.com • onemarinahomes.com

650.369.3500

Exclusively represented by Polaris Pacific  
A California licensed broker. DRE 01499250

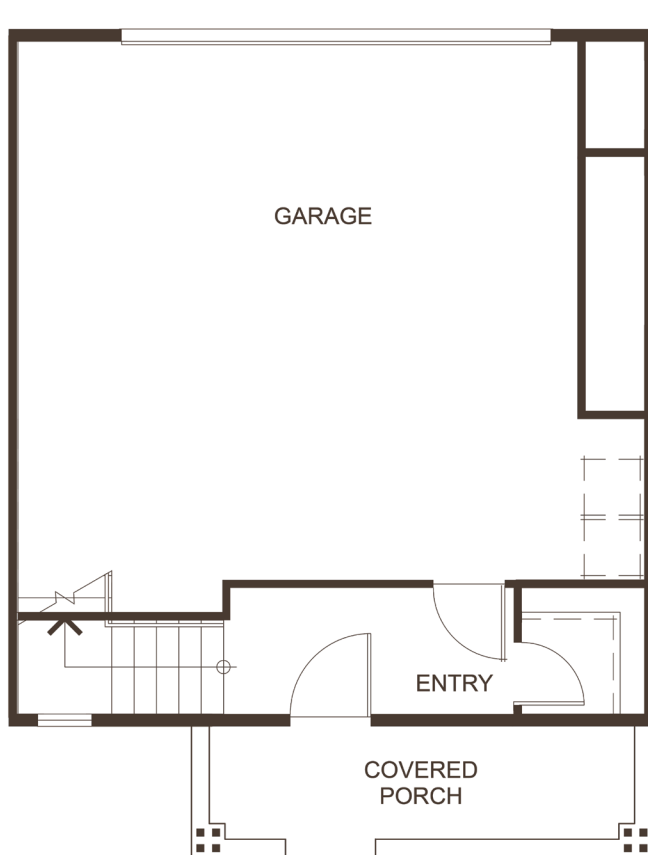
 Floorplans are conceptual only. They should not be relied upon as representations, express or implied. The developer reserves the right to change plans, elevations, materials and specifications without prior notice. Deck size and configurations vary per home. Revised January 2014. ©2014 The Pauls Corporation.

# ONE MARINA

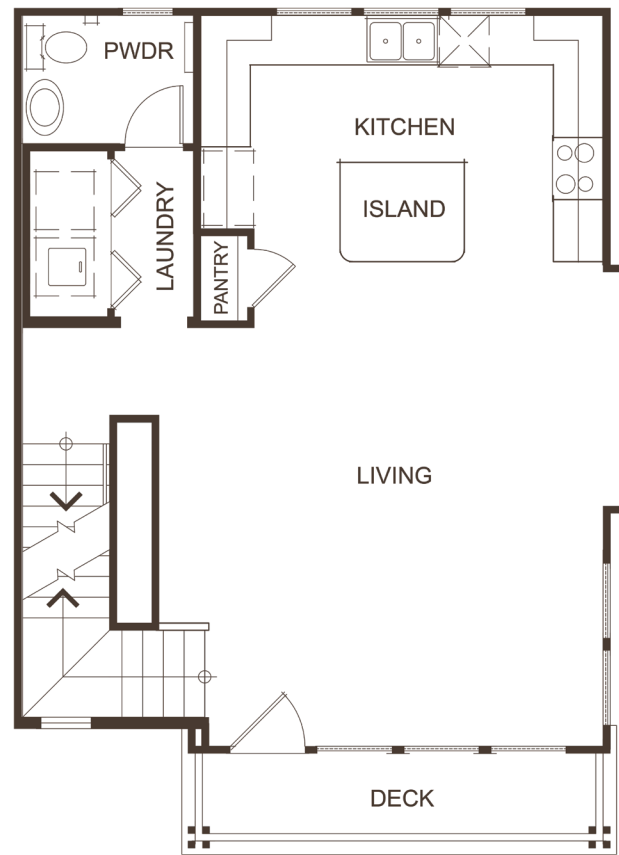
One waterfront location, one great place to live.

2 Bedrooms

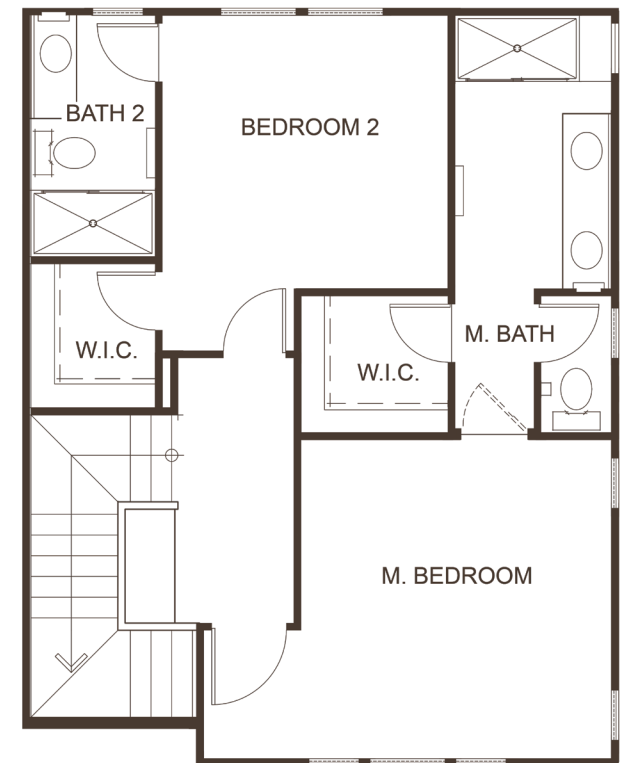
2.5 Baths



LOWER LEVEL



MAIN LEVEL



UPPER LEVEL

# FEATURES LIST

## HOME

8' Therma-Tru® fiberglass entry door  
Satin nickel entry door hardware  
Ceramic 12"x12" entry tile  
Carpet throughout living room, dining room,  
stairs and bedroom areas  
8' two-panel interior doors  
Satin nickel lever interior door hardware  
Laundry room (washer and dryer optional)  
Tech space (per plan)  
Decora light switches  
Phone/Cat 5 in kitchen, family/living room, bedrooms  
and tech space; cable in family room and bedrooms  
Security system pre-wire at operable doors at entry  
level, with key pad pre-wire at garage entrance door  
Pre-wired for dual-zone air conditioning  
(air conditioning system is optional)  
9' ceilings or higher throughout (per plan)  
White vinyl dual pane, low-E windows  
2-car attached garage with EasyLift belt driven  
automatic garage opener  
Tankless hot water heaters

## BATHROOMS

6"x 6" tile countertops  
Mid-Continent® Bayfield Oak Cabinetry  
Kohler® dual sinks at vanity in master baths  
Moen® chrome plumbing fixtures  
Separate shower and Sterling soaking tub (per plan)  
Private water closet with elongated toilet  
in master baths  
Pedestal sink in powder room with elongated  
toilet (per plan)  
Vinyl flooring

## KITCHEN

Whirlpool® stainless steel appliances

- 30" 4-burner, continuous grate gas cooktop
- 30" electric, self-cleaning, under-counter oven
- Built-in microwave/hood combo
- 4-cycle Energy Star dishwasher

6"x 6" tile countertops with 6" backsplash  
Vinyl flooring  
Moen chrome faucet  
Kohler white cast iron double bowl sink  
½ horsepower disposal  
Mid-Continent Bayfield Oak Cabinetry  
Kitchen islands (per plan)

## UPGRADES & OPTIONS

We have an extensive options and upgrades program. Please see a sales associate for details.


Alarm system  
Air conditioning  
Lighting upgrades  
Home theatre upgrades  
Cabinet upgrades  
Countertop upgrades  
Flooring upgrades  
Plumbing fixture upgrades  
Designer interior paint scheme  
Window treatments  
Appliance upgrades

# ONE MARINA

info@onemarinahomes.com • onemarinahomes.com

650.369.3500

Exclusively represented by Polaris Pacific  
A California licensed broker. DRE 01499250

 Floorplans are conceptual only. They should not be relied upon as representations, express or implied. The developer reserves the right to change plans, elevations, materials and specifications without prior notice. Deck size and configurations vary per home. Revised January 2014. ©2014 The Pauls Corporation.

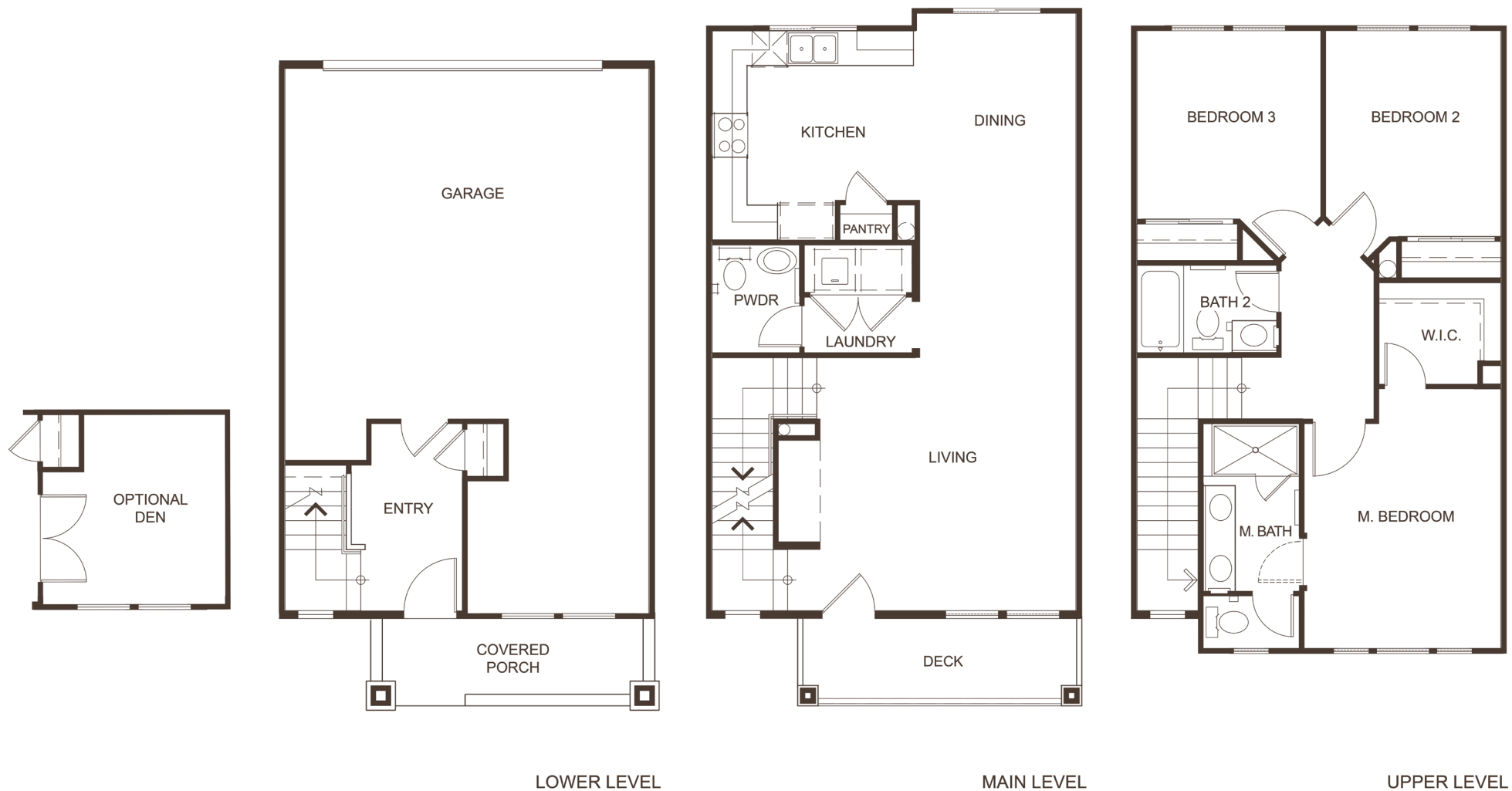
# ONE MARINA

One waterfront location, one great place to live.

3 Bedrooms

2.5 Baths

J



# FEATURES LIST

## HOME

8' Therma-Tru® fiberglass entry door  
Satin nickel entry door hardware  
Ceramic 12"x12" entry tile  
Carpet throughout living room, dining room,  
stairs and bedroom areas  
8' two-panel interior doors  
Satin nickel lever interior door hardware  
Laundry room (washer and dryer optional)  
Tech space (per plan)  
Decora light switches  
Phone/Cat 5 in kitchen, family/living room, bedrooms  
and tech space; cable in family room and bedrooms  
Security system pre-wire at operable doors at entry  
level, with key pad pre-wire at garage entrance door  
Pre-wired for dual-zone air conditioning  
(air conditioning system is optional)  
9' ceilings or higher throughout (per plan)  
White vinyl dual pane, low-E windows  
2-car attached garage with EasyLift belt driven  
automatic garage opener  
Tankless hot water heaters

## BATHROOMS

6"x 6" tile countertops  
Mid-Continent® Bayfield Oak Cabinetry  
Kohler® dual sinks at vanity in master baths  
Moen® chrome plumbing fixtures  
Separate shower and Sterling soaking tub (per plan)  
Private water closet with elongated toilet  
in master baths  
Pedestal sink in powder room with elongated  
toilet (per plan)  
Vinyl flooring

## KITCHEN

Whirlpool® stainless steel appliances

- 30" 4-burner, continuous grate gas cooktop
- 30" electric, self-cleaning, under-counter oven
- Built-in microwave/hood combo
- 4-cycle Energy Star dishwasher

6"x 6" tile countertops with 6" backsplash  
Vinyl flooring  
Moen chrome faucet  
Kohler white cast iron double bowl sink  
½ horsepower disposal  
Mid-Continent Bayfield Oak Cabinetry  
Kitchen islands (per plan)

## UPGRADES & OPTIONS

We have an extensive options and upgrades program. Please see a sales associate for details.


Alarm system  
Air conditioning  
Lighting upgrades  
Home theatre upgrades  
Cabinet upgrades  
Countertop upgrades  
Flooring upgrades  
Plumbing fixture upgrades  
Designer interior paint scheme  
Window treatments  
Appliance upgrades

# ONE MARINA

info@onemarinahomes.com • onemarinahomes.com

650.369.3500

Exclusively represented by Polaris Pacific  
A California licensed broker. DRE 01499250

 Floorplans are conceptual only. They should not be relied upon as representations, express or implied. The developer reserves the right to change plans, elevations, materials and specifications without prior notice. Deck size and configurations vary per home. Revised January 2014. ©2014 The Pauls Corporation.