

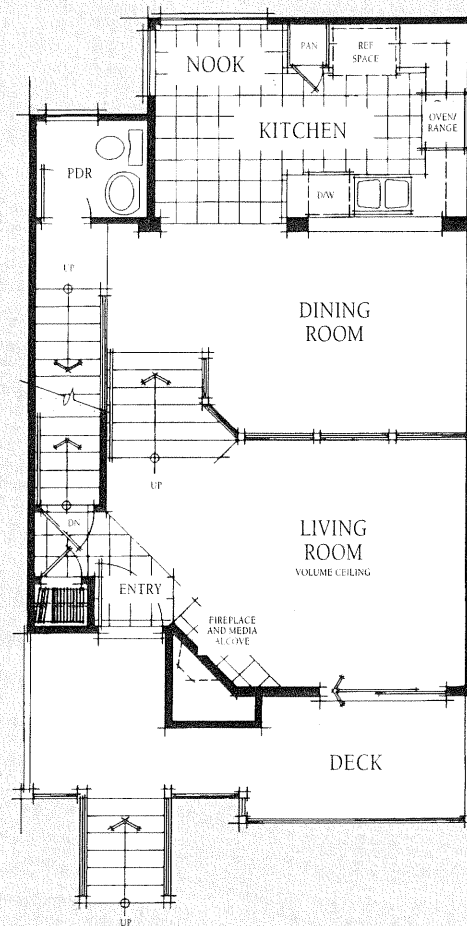
A dramatic angled fireplace is the focal point of the living room, which also has a sliding glass door leading to an inviting deck. Also on the first floor is a powder room — a very convenient feature, especially when you're entertaining. The master suite offers the luxury of two wardrobe closets, plus an oval tub. And you're sure to appreciate the indispensable washer/dryer space.

The Mediterranean

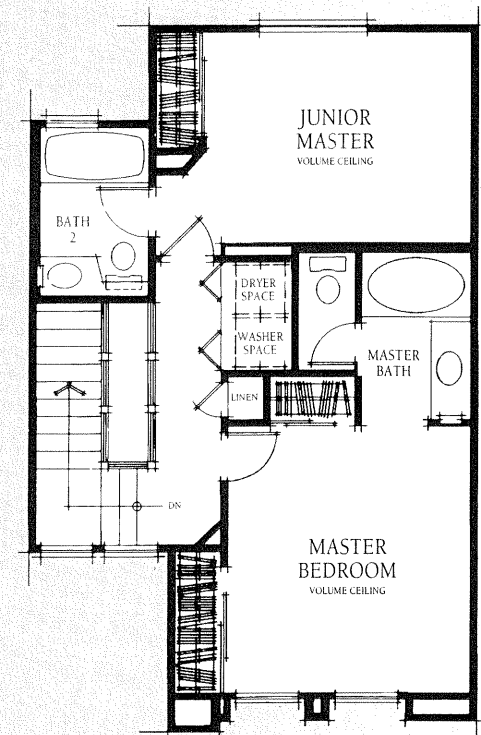
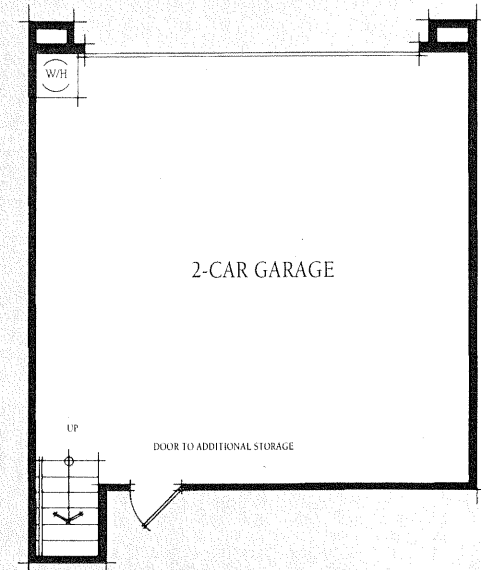
1178 square feet

2 Bedroom

2½ Bath



FIRST FLOOR



SECOND FLOOR

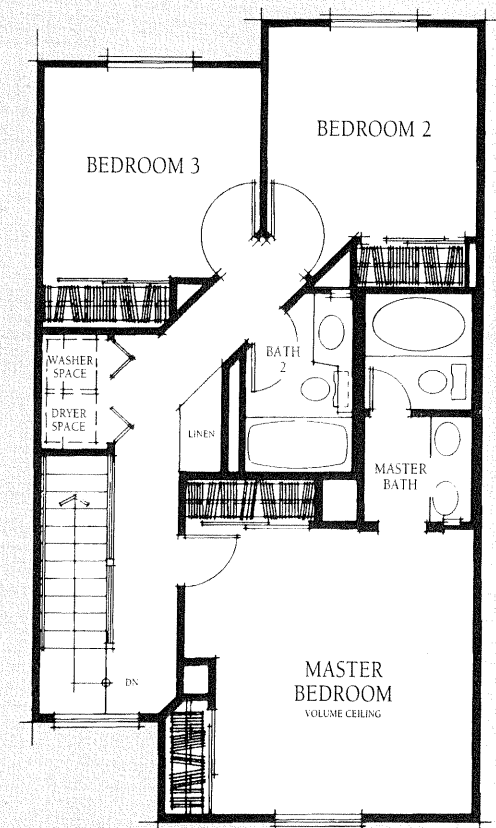
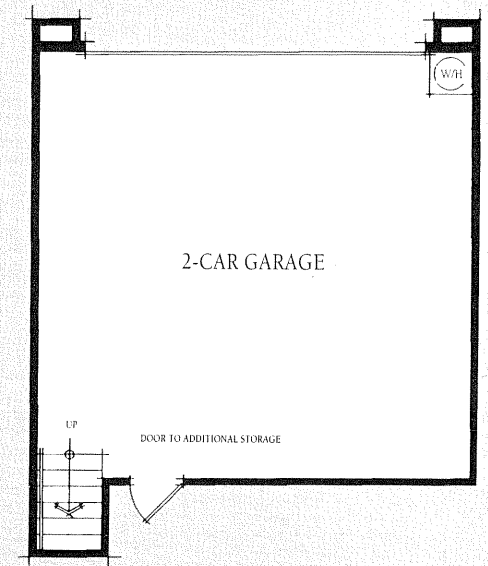
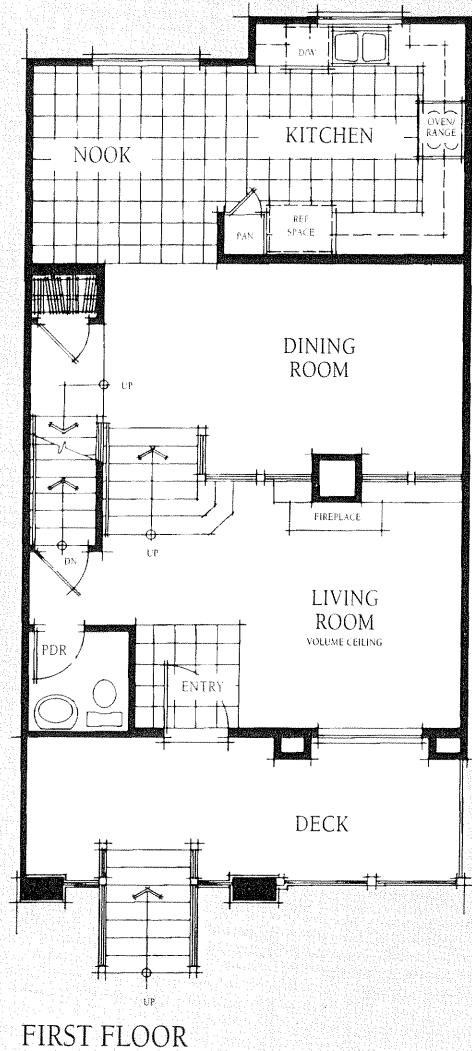
Cooking is a pleasure indeed in this well-designed home, thanks to plenty of counter space in the gourmet kitchen. The kitchen also features a sizeable...and sunny...breakfast nook for casual dining. In addition, the living room offers the drama of a soaring volume ceiling as well as the ambience of a woodburning fireplace.

The Atlantic

1400 square feet

3 Bedroom

2 ½ Bath



SECOND FLOOR

The most spacious home in The Cove collection is complete with a family room that opens to the gourmet kitchen — ideal for casual entertaining. A double door entry welcomes you into the master bedroom, which boasts not only a walk-in closet, but a wardrobe closet as well. In addition, the two secondary bedrooms share a convenient Jack 'n Jill bath.

The Pacific

1610 square feet

3 Bedroom

2½ Bath

Family Room

