

The ARUBA

PLAN B

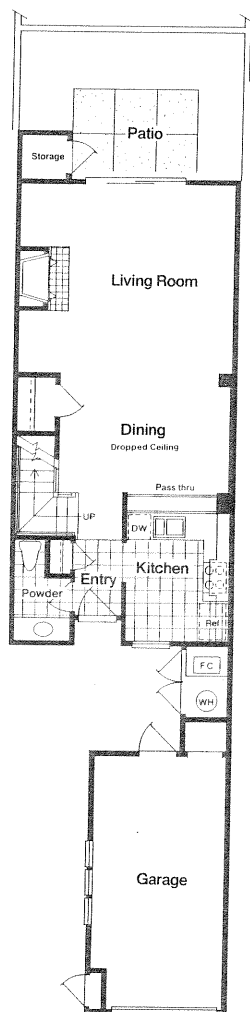
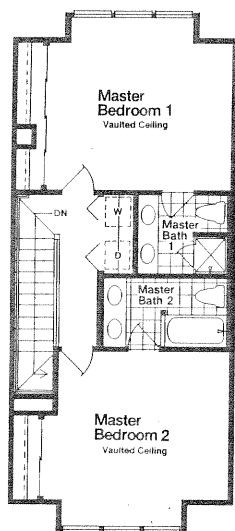
TWO-STORY

TWO BEDROOMS/TWO AND ONE-HALF BATHS

APPROXIMATELY 1,400 SQUARE FEET

ONE-CAR ATTACHED GARAGE

The exciting, contemporary Aruba. Two master bedroom suites with elegantly appointed baths highlight this trend-setting home. Downstairs, the spacious living area is enhanced by a private patio, handsome fireplace and dropped ceilings above the formal dining room. As a feature of convenience, the kitchen offers easy access to the attached garage.



The MARTINIQUE

PLAN B-1

TRI-LEVEL

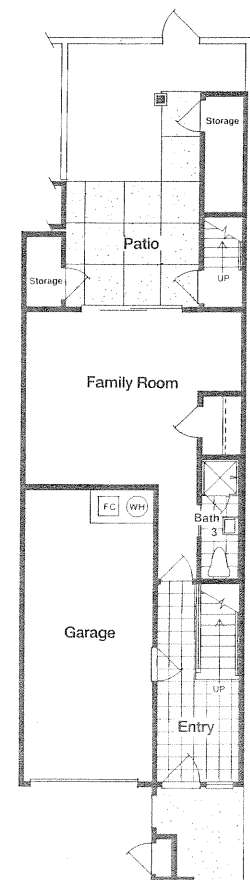
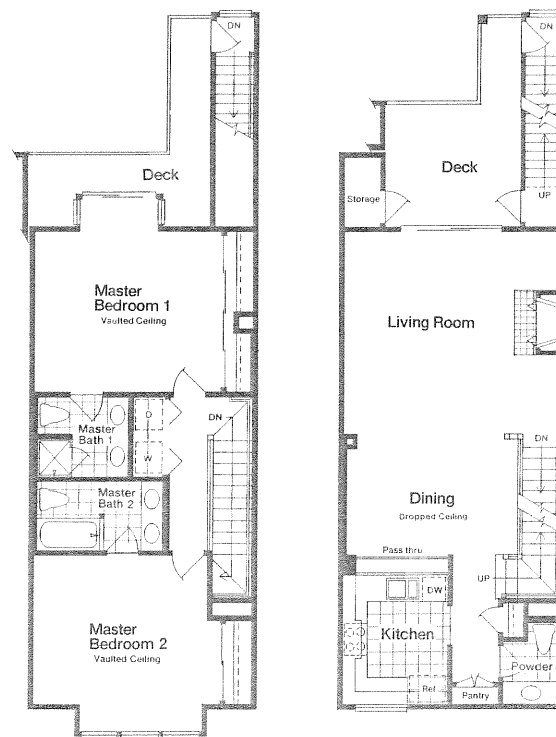
TWO BEDROOMS/FAMILY ROOM

THREE AND ONE-HALF BATHS

APPROXIMATELY 1,880 SQUARE FEET

ONE-CAR ATTACHED GARAGE

The exotic Martinique. The potential for lively entertaining is considerable in this spectacular tri-level plan. Two decks and a private patio off the family room provide bird-watching vantage points and outdoor living opportunities. The interior offers dual master suites with majestic bay windows and vaulted ceilings at the top level, an exciting living and dining area at the mid-level, and a comfortable ground-level family room with a full bath and direct garage access.



The BARBADOS

PLAN C

TWO-STORY

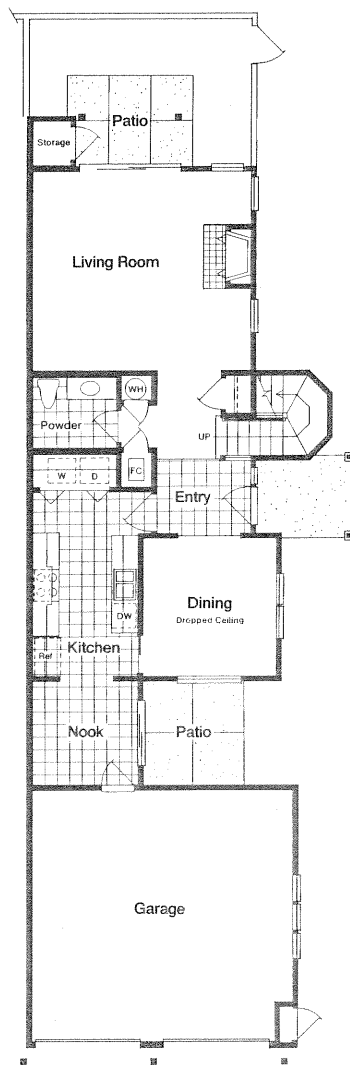
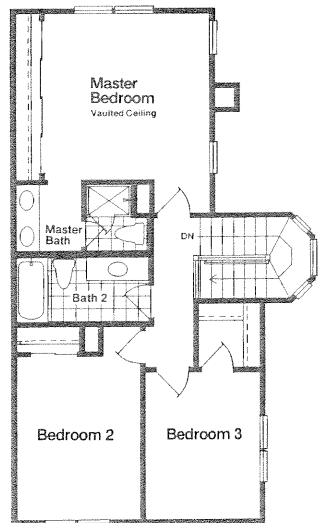
THREE BEDROOMS

TWO AND ONE-HALF BATHS

APPROXIMATELY 1,680 SQUARE FEET

TWO-CAR ATTACHED GARAGE

The elegant Barbados. This well-designed home is the ultimate for those people who welcome any reason to receive guests. A trellised patio is the focal point of the handsome living room, while a formal dining room, charming breakfast nook and large kitchen with pantry complete the first level. A luxurious master bedroom and two functional secondary bedrooms occupy the second level. A



The ANTIGUA

PLAN C-1

TRI-LEVEL

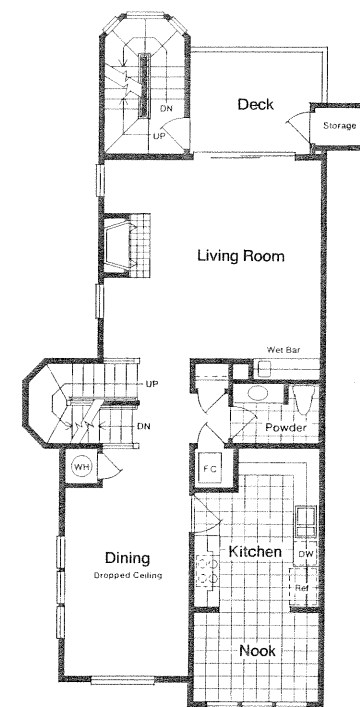
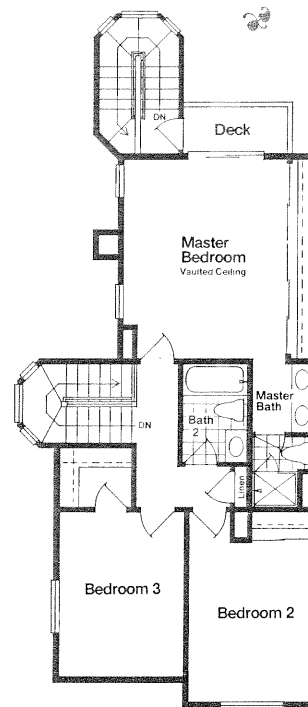
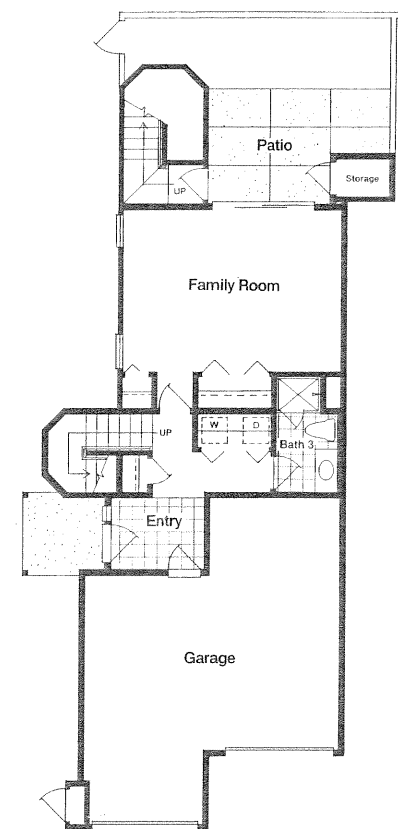
THREE BEDROOMS

THREE AND ONE-HALF BATHS

APPROXIMATELY 2,270 SQUARE FEET

TWO-CAR ATTACHED GARAGE

The traditional, eclectic Antigua. Ideal for the family, this appealing home offers exciting indoor-outdoor living on three levels. For convenience, the lower level is directly accessible through the two-car garage. The large family room and patio are perfect for children, while the mid-level's comfortable living room and formal dining room provide an excellent place in which to entertain guests. The bedroom level is thoughtfully removed from the traffic flow below. Of special note—the master bedroom and bath suite open onto a deck with splendid privacy.



The BELIZE

PLAN A

TWO-STORY

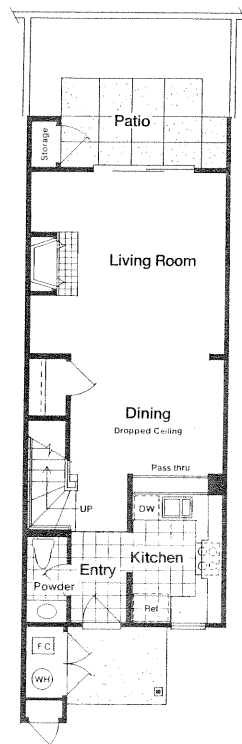
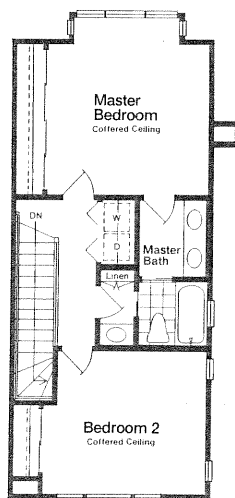
TWO BEDROOMS

ONE AND ONE-HALF BATHS

APPROXIMATELY 1,220 SQUARE FEET

ONE-CAR DETACHED GARAGE

The Belize...private, intimate. This home's custom-designed kitchen implements a special work-triangle, as well as a serving bar for easy access to the dining room which is topped with an impressive coffered ceiling. The living areas, enhanced with nine-foot ceilings and a cozy fireplace, open onto a spacious patio. Upstairs, special considerations such as pocket doors, ample closets and a compartmented bath with three basins maximize space usage.



The BIMINI

PLAN A-1

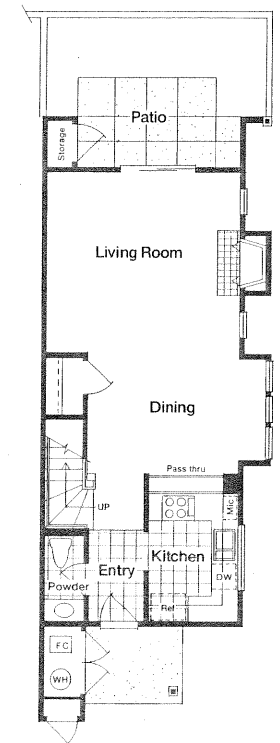
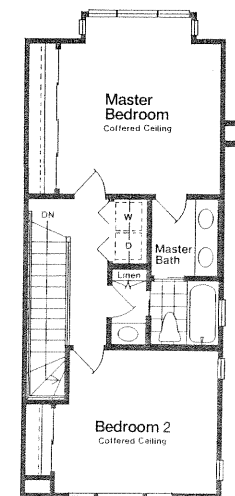
TWO-STORY

TWO BEDROOMS/ONE AND ONE-HALF BATHS

APPROXIMATELY 1,300 SQUARE FEET

ONE-CAR DETACHED GARAGE

The Bimini...airy, but cozy. In this successful design, the kitchen and living areas benefit from superb natural lighting, making them ideal places in which to read, work or entertain. Dazzling sunlight illuminates the dining room through a large bay window. Two spacious bedrooms with coffered ceilings and dramatic bay or double windows occupy the upstairs.



The NASSAU

PLAN D

TWO-STORY

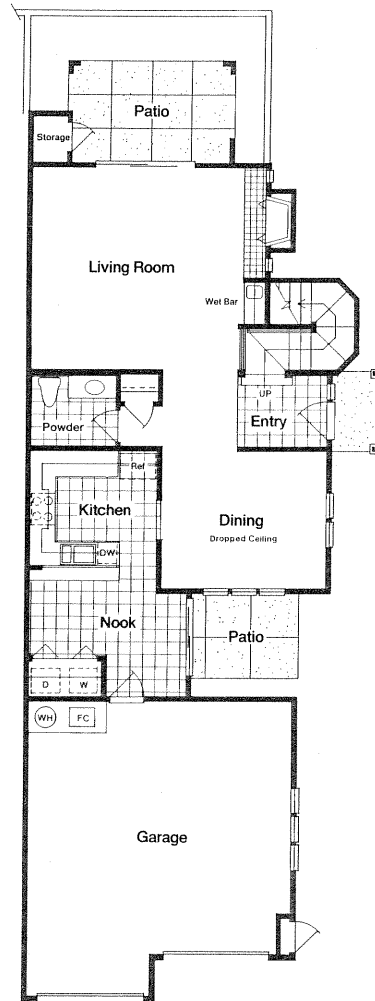
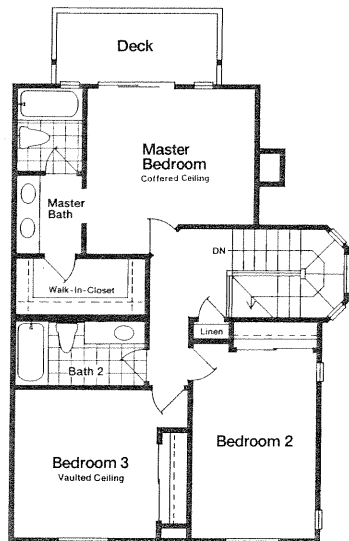
THREE BEDROOMS

TWO AND ONE-HALF BATHS

APPROXIMATELY 1,810 SQUARE FEET

TWO-CAR ATTACHED GARAGE

The sumptuous Nassau. Natural light and bay breezes from two private patios enliven this home's formal areas. Both the intimate breakfast nook and romantic formal dining room look out onto a charming front patio. Upstairs, the master bedroom features a private bath, a dressing area with walk-in closet, and an ample deck for seeing and sunning. Two spacious secondary bedrooms are perfect for guests or a home office.



The MONTSERRAT

PLAN E

TWO-STORY

TWO BEDROOMS

TWO AND ONE-HALF BATHS

APPROXIMATELY 1,590 SQUARE FEET

TWO-CAR ATTACHED GARAGE

The Montserrat... refined and sophisticated. Two unusually large and airy master bedroom suites (one with a fireplace) occupy this wonderful plan's entire upstairs. Downstairs, the impressive design continues with an oversized patio adjoining the living and dining rooms. Completing this level are a formal foyer leading to an ample kitchen and sunlit breakfast nook.

