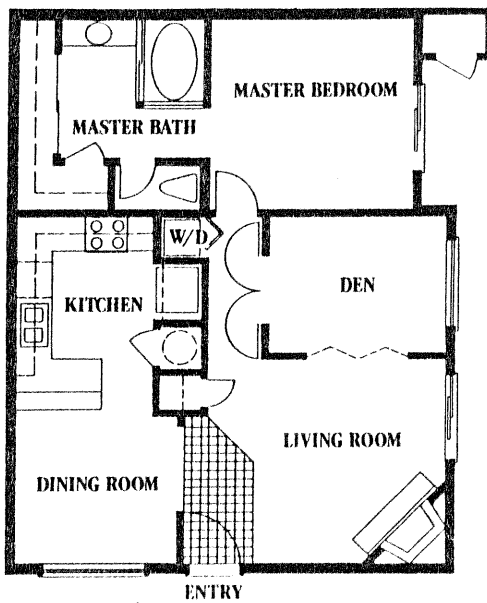


Plan 1 The Balclutha

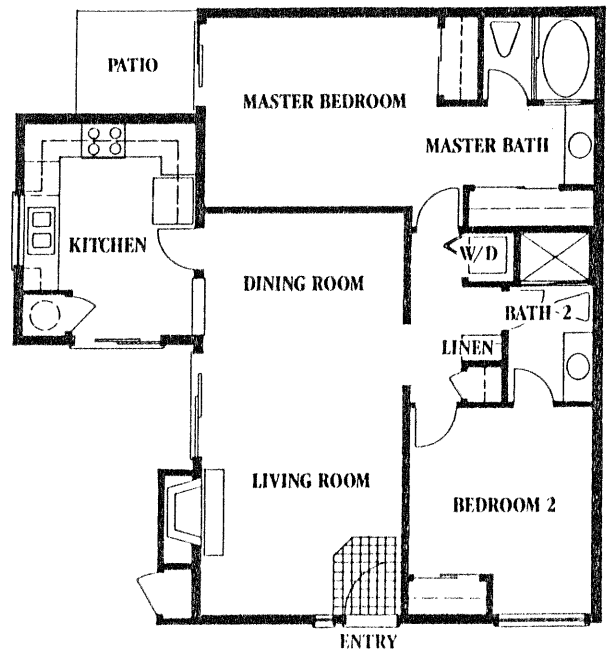
1 Bedroom + Den, 1 Bath



The three-masted Balclutha has enjoyed a close association with San Francisco Bay for nearly 100 years. She made the Cape Horn voyage from Bay Area ports to Europe regularly during the 1880's and 1890's, and later took part in the trans-Pacific lumber trade making Redwood City one of her ports of call. The Balclutha has since been restored and is docked at Pier 43 in San Francisco.

Plan 2 The Reliance

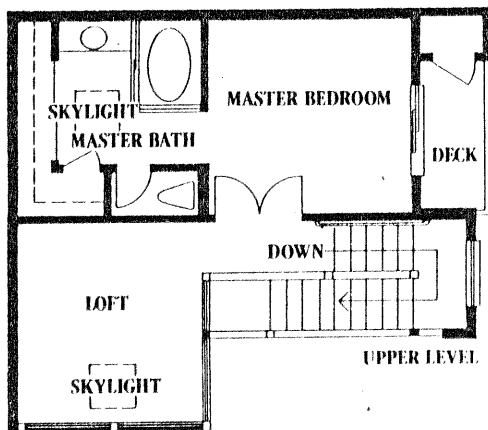
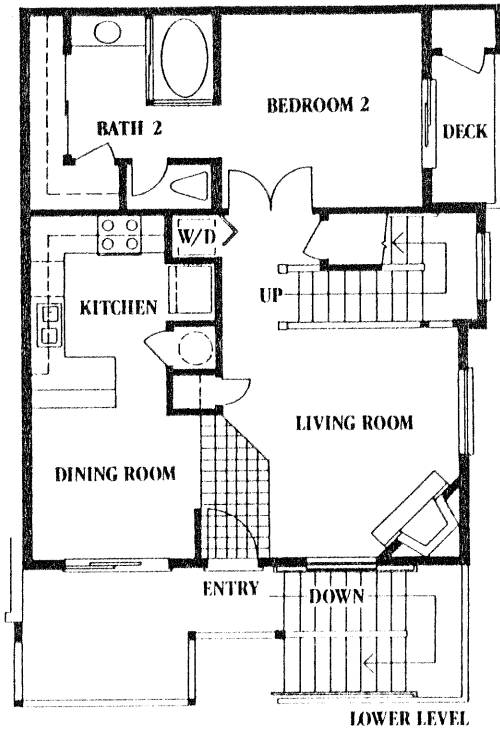
2 Bedrooms, 2 Baths



This four-masted bark made the long Cape Horn voyage to Europe from several Bay Area ports regularly around the turn of the century. She took part in the enormous grain trade of the time.

Plan 3 The Valparaiso

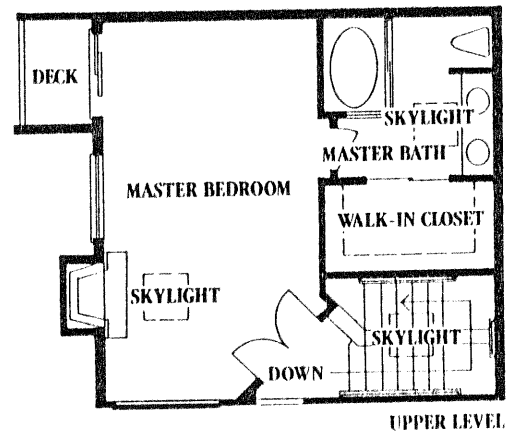
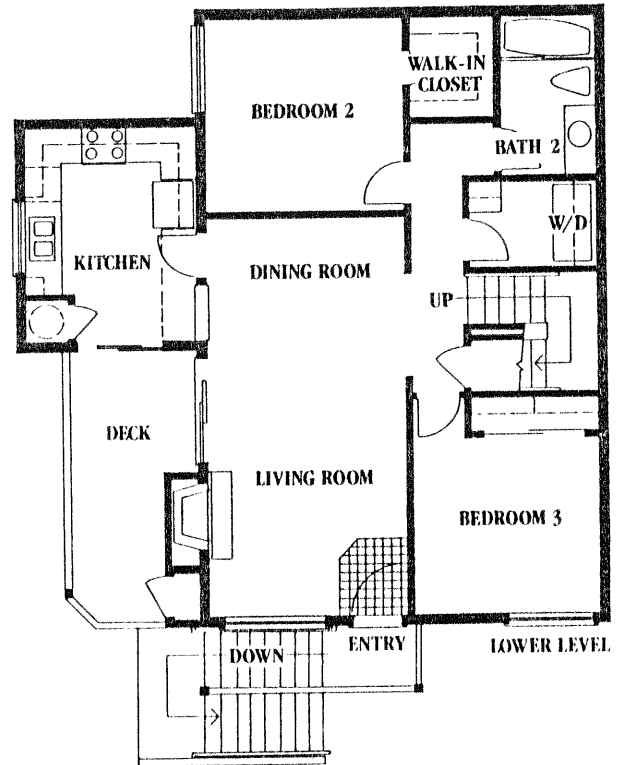
2 Bedrooms + Loft, 2 Baths



This full-rigged clipper ship was built shortly after the Civil War and made many stops in San Francisco Bay ports over the years. Built for speed, the Valparaiso and other clipper ships became famous for providing fast transportation from the East to the West coasts via the Cape Horn route until the end of the nineteenth century.

Plan 4 The Sausalito

3 Bedrooms, 2 Baths



This three-masted schooner carried lumber from port to port along the West Coast around the turn of the century. One of her frequent ports of call was Redwood City.